

HUMBOLDT TRANSIT AUTHORITY

FUELING FACILITY PROJECT

EUREKA, CALIFORNIA



PREPARED BY:



OCTOBER 2015

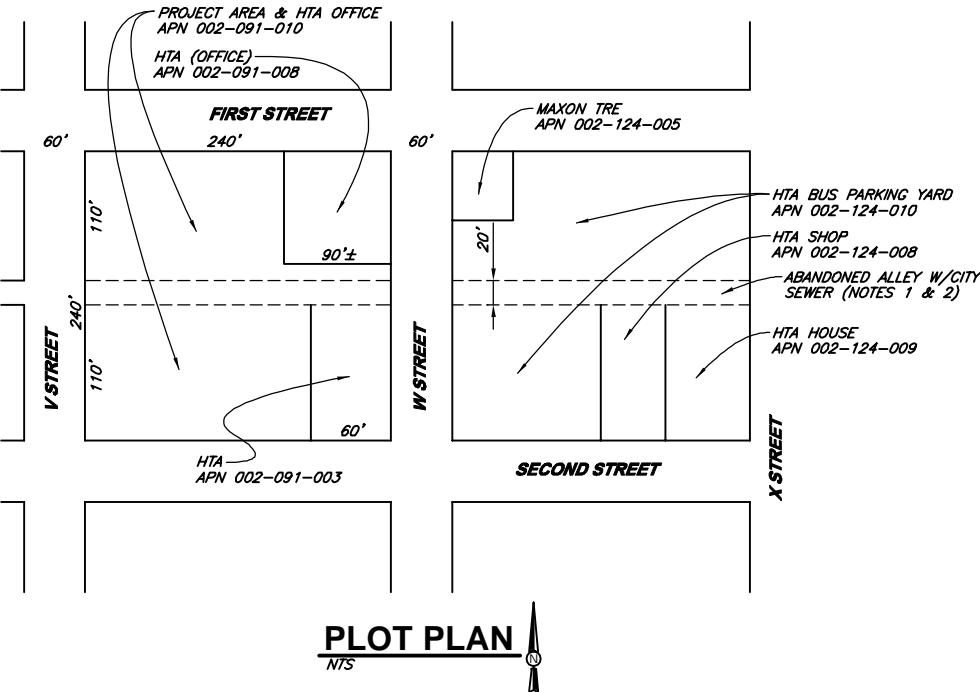
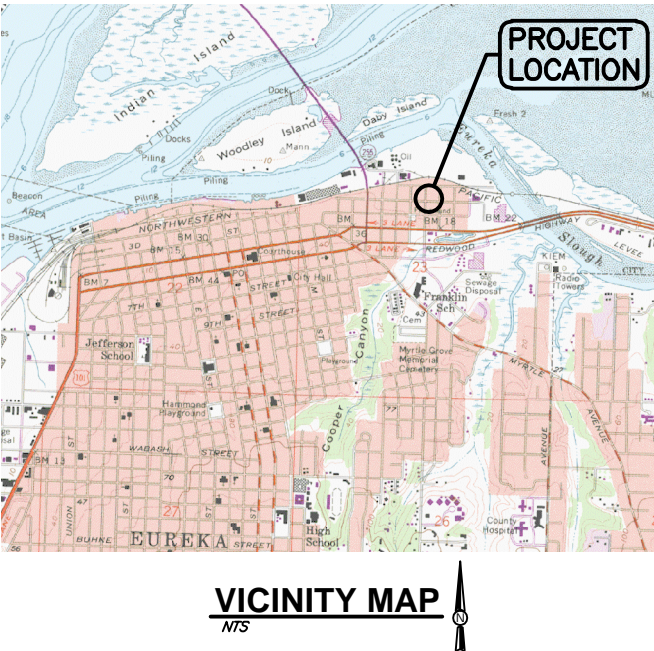
APPROVALS

GREG PRATT
HUMBOLDT TRANSIT AUTHORITY
GENERAL MANAGER

DATE

JARED S. O'BARR
SHN CONSULTING ENGINEERS & GEOLOGISTS, INC.
PROJECT ENGINEER

DATE



INDEX OF SHEETS

SHT	DWG	TITLE
1	G-1	COVER
2	G-2	STANDARD ABBREVIATIONS AND LEGENDS
3	C-1	DEMOLITION & EROSION CONTROL PLAN
4	C-2	SITE PLAN
5	C-3	SECTIONS
6	C-4	FUELING SYSTEM PIPING SCHEMATIC
7	C-5	DETAILS
8	C-6	DETAILS
9	C-7	PARKING PLAN
10	E-1	ELECTRICAL SITE PLAN AND DIAGRAMS

RECORD DRAWING

THIS RECORD DRAWING HAS BEEN PREPARED, IN PART, ON THE BASIS OF INFORMATION COMPILED AND FURNISHED BY OTHERS AND NOT VERIFIED BY THE ENGINEER. THIS IS NOT A CERTIFIED DOCUMENT AS TO THE ORIGINAL DOCUMENT BUT AS TO THE REVISIONS TO THIS DRAWING ISSUED AND SEALED BY:

JARED S. O'BARR
C76125
ON 10/01/2015

THE RECORD DRAWING IS ONLY CERTIFIED AS TO THE REVISIONS. FIELD VERIFICATION OF CRITICAL FACTS AND DATA MUST BE MADE IF THIS DOCUMENT IS TO BE USED AS A BASIS FOR FUTURE WORK.



VERIFY SCALES
B.B. IS ONE INCH ON ORIGINAL DRAWING
IF NOT ONE INCH ON THIS SHEET, ADJUST SCALES ACCORDINGLY

CONSULTING ENGINEERS & GEOLOGISTS, INC.
WWW.SHN-ENGR.COM
812 W. WABASH AVE.
EUREKA, CA. 95501
707-441-8855



RECORD DRAWINGS
PB
BY

03/2016
DATE
NO.

DSGN USO/PB
DR CDN
CHK MEL
APVD

HUMBOLDT TRANSIT AUTHORITY
FUELING FACILITY PROJECT
133 V ST (APN 002-091-008) EUREKA, CALIFORNIA

COVER
SHEET
G-1
SEQ 1
DATE 10/2015
PROJ. NO. 014004.100

ABBREVIATIONS		
A	ABN	— ABANDON
	ABS	— ACRYLONITRILE-BUTADIENE-STYRENE
	AB	— ANCHOR BOLT, AGGREGATE BASE
	AC	— ASPHALTIC CONCRETE
	ACP	— ASBESTOS CEMENT PIPE
	ACI	— AMERICAN CONCRETE INSTITUTE
	ADJ	— ADJUSTABLE
	AGGR	— AGGREGATE
	AISC	— AMERICAN INSTITUTE OF STEEL CONSTRUCTION
	AL	— ALUMINUM
B	ALT	— ALTERNATE
	AP	— ANGLE POINT
	APPROX	— APPROXIMATELY
	ARCH	— ARCHITECTURAL
	ASTM	— AMERICAN SOCIETY FOR TESTING & MATERIALS
	AUTO	— AUTOMATIC
	AUX	— AUXILIARY
	AT	— AT
	BC	— BEGIN CURVE
	BCR	— BEGIN CURB RETURN
C	BD	— BOARD
	BF	— BLIND FLANGE
	BFV	— BUTTERFLY VALVE
	BK	— BOOK OR BACK
	BLDG	— BUILDING
	BM	— BENCH MARK, BEAM
	BNP	— BEST MANAGEMENT PRACTICE
	BO	— BLOW OFF
	BOT	— BOTTOM
	BRG	— BEARING
D	BTWN	— BETWEEN
	BV	— BALL VALVE
	BVC	— BEGINNING OF VERTICAL CURVE
	BW	— BACK OF WALK
	BWV	— BACKWATER VALVE
	C	— CHANNEL (STRUCTURAL SHAPE)
	CARV	— COMBINATION AIR AND VACUUM RELEASE VALVE
	CATV	— CABLE TELEVISION
	CB	— CATCH BASIN
	CEIL	— CEILING
E	CFM	— CUBIC FEET PER MINUTE
	CFS	— CUBIC FEET PER SECOND
	CHEM	— CHEMICAL
	CI	— CAST IRON
	CIP	— CAST IRON PIPE
	C.I.P.	— CAST IN PLACE
	CJ	— CONSTRUCTION JOINT
	CLR	— CLEAR
	CL	— CENTERLINE
	CMP	— CORRUGATED METAL PIPE
F	CMU	— CONCRETE MASONRY UNIT
	CTSK	— COUNTERSINK
	CO	— CLEANOUT
	COL	— COLUMN
	CONC	— CONCRETE
	CONT	— CONTINUOUS OR CONTINUED
	COORD	— COORDINATE
	CPLG	— COUPLING
	CRS	— COLD ROLLED STEEL
	CTR	— CENTER
G	CTS	— COPPER TUBE SIZE
	CU	— CUBIC
	CU FT	— CUBIC FEET
	CV	— CHECK VALVE
	CW	— COLD WATER
	CY	— CUBIC YARD
	d	— DEGREE (ANGLE)
	D	— PENNY (NAIL SIZE)
	DB	— STORM DRAIN
	DBL	— DISTRIBUTION BOX
H	DBL	— DOUBLE
	DF	— DOUGLAS FIR
	DI	— DROP INLET OR DUCTILE IRON
	DIA	— DIAMETER
	DIAG	— DIAGONAL
	DIM	— DIMENSION
	DIMJ	— DUCTILE IRON MECHANICAL JOINT
	DIP	— DUCTILE IRON PIPE
	DET	— DETAIL
	DWG	— DRAWING
I	DW	— DRIVEWAY
	(E)	— EXISTING
	E	— EASTING OR EAST
	EA	— EACH
	EC	— END CURVE
	ECR	— END CURB RETURN
	EF	— EACH FACE
	EFL	— EFFLUENT
	EG	— EXISTING GRADE/GROUND
	ELBOW	— ELBOW
J	ELEC	— ELECTRIC OR ELECTRICAL
	ELEV	— ELEVATION
	ENGR	— ENGINEER
	EP	— EDGE OF PAVING
	EQ	— EQUAL
	EQUIP	— EQUIPMENT
	ER	— EDGE OF ROAD
	EVC	— END OF VERTICAL CURVE
	EW	— EACH WAY
	EWEF	— EACH WAY, EACH FACE
K	EXC	— EXCAVATE
	EXP	— EXPOSED OR EXPANSION
	EXP JT	— EXPANSION JOINT
	EXST	— EXISTING
	EXT	— EXTERIOR
	F	— FLANGE
	FC	— FLEXIBLE COUPLING OR FACE OF CURB
	FCA	— FLANGED COUPLING ADAPTER
	FD	— FLOOR DRAIN
	FDC	— FIRE DEPARTMENT CONNECTION
L	FDN	— FOUNDATION
	FF	— FINISH FLOOR
	FG	— FINISHED GRADE
	FH	— FIRE HYDRANT
	FIG	— FIGURE
	FIN	— FINISH
	FIP	— FEMALE IRON PIPE
	FL	— FLOW LINE
	FLG	— FLANGE
	FLR	— FLOOR
M	FLTR	— FILTER
	FO	— FIBER OPTIC
	FOC	— FACE OF CONCRETE
	FT	— FOOT OR FEET
	FT2	— SQUARE FEET
	FT3	— CUBIC FEET
	FTG	— FOOTING
	FUT	— FUTURE
	G	— GAS
	GA	— GAGE
	GALV	— GALVANIZED
N	GIP	— GALVANIZED IRON PIPE
	GM	— GAS METER
	GPD	— GALLONS PER DAY
	GPH	— GALLONS PER HOUR
	GPM	— GALLONS PER MINUTE
	GRD	— GRADE OR GROUND
	GSP	— GALVANIZED STEEL PIPE
	GV	— GATE VALVE
	GYP	— GYPSUM
	H	— HOSE BIBB
O	HDPE	— HIGH DENSITY POLYETHYLENE
	HDR	— HEADER
	HDW	— HARDWARE
	HMA	— HOT MIX ASPHALT
	HOR	— HORIZONTAL
	HP	— HORSEPOWER, HIGH POINT
	HR	— HOUR
	HT	— HEIGHT
	HW	— HOT WATER
	HWR	— HOT WATER RETURN
P	HWS	— HOT WATER SUPPLY
	I	— INSIDE DIAMETER
	ID	— INCH
	INFL	— INFLUENT
	INSUL	— INSULATE OR INSULATION
	INT	— INTERIOR
	INV	— INVERT
	IPS	— IRON PIPE SIZE
	J	— JOINT
	JP	— JOINT POLE
Q	K	— THOUSAND POUNDS
	KIP	— KILOWATT
	L	— LENGTH (STRUCTURAL SHAPE)
	LAT	— LATERAL
	LB	— POUND
	LF	— LINEAR FEET
	LG	— LONG
	LH	— LEFT HAND
	LONG	— LONGITUDINAL
	LP	— LOW POINT
R	LPG	— LIQUIFIED PETROLEUM GAS
	LRP	— LEGALLY RESPONSIBLE PARTY
	LR	— LONG RADIUS
	LT	— LEFT
	LVC	— LENGTH OF VERTICAL CURVE
	M	— MATERIAL
	MATL	— MAXIMUM
	MECH	— MECHANICAL
	MF	— MEGA-FLANGE PIPE JOINT
	MFR	— MANUFACTURER
S	MGD	— MILLION GALLONS PER DAY
	MH	— MANHOLE
	MIN	— MINIMUM OR MINUTE
	MIP	— MALE IRON PIPE
	MISC	— MISCELLANEOUS
	MJ	— MECHANICAL JOINT
	MNPT	— MALE NATIONAL PIPE THREAD
	MTL	— METAL
	MWS	— MAXIMUM WATER SURFACE
	N	— NEW
T	(N)	— NORTHING OR NORTH
	NC	— NORMALLY CLOSED
	NIC	— NOT IN CONTRACT
	NF	— NON-FREEZE
	NO	— NUMBER OR NORMALLY OPEN
	NOM	— NOMINAL
	NP	— NEW PAVEMENT
	NPT	— NATIONAL PIPE THREAD
	NTS	— NOT TO SCALE
	#	— NUMBER
U	O	— ON CENTER
	OC	— OUTSIDE DIAMETER
	OD	— ORIGINAL GROUND
	OG	— OVERFLOW
	OVFL	— OVERFLOW
	OZ	— OUNCE
	OH	— OVERHEAD
	P	— POINT OF CURVE
	PC	— PORTLAND CEMENT CONCRETE
	PCC	— POUNDS PER CUBIC FOOT
V	PCF	— PLAIN END
	PE	— PERFORATED
	PERF	— POLYETHYLENE PIPE
	PEP	— POINT OF INTERSECTION
	PI	— PLATE
	PL	— PROPERTY LINE
	PLCS	— PLACES
	PLYWD	— PLYWOOD
	PMP	— PERFORATED METAL PIPE
	POC	— POINT ON CURVE
W	POT	— POINT OF TANGENT
	PP	— POWER POLE
	PRC	— POINT OF REVERSE CURVE
	PREFAB	— PREFABRICATED
	PRELIM	— PRELIMINARY
	PRESS	— PRESSURE
	PROP	— PROPERTY
	PSF	— POUNDS PER SQUARE FOOT
	PSI	— POUNDS PER SQUARE INCH
	PSIG	— POUNDS PER SQUARE INCH, GAUGE
X	PT	— POINT OF TANGENCY, POINT
	PUE	— PUBLIC UTILITY EASEMENT
	PV	— PLUG VALVE
	PVC	— POLYVINYL CHLORIDE PLASTIC
	PVI	— POINT OF VERTICAL INTERSECTION
	PVMT	— PAVEMENT
	Q	— QUANTITY
	R	— RADIUS
	L	— LENGTH
	Δ	— (DELTA)
	T	— (TANGENT)

CURVE DATA

R (RADIUS)
L (LENGTH)
Δ (DELTA)
T (TANGENT)

UTILITIES LEGEND

PROPOSED EXISTING

		GATE VALVE
		PLUG VALVE
		BALL VALVE
		BUTTERFLY VALVE
		AUTOMATICALLY OPERATED VALVE (P= PNEUMATIC, E= ELECTRIC, S= SOLENOID, H= HYDRAULIC, D= DIAPHRAGM ACTUATOR)
		3-WAY VALVE
		GLOBE VALVE
		ANGLE VALVE
		PRESSURE REGULATING VALVE
		PRESSURE RELIEF VALVE
		CHECK VALVE
		AIR OR VACUUM RELEASE VALVE
		AIR AND VACUUM VALVE
		COMBINATION AIR VALVE
		FLOW METER
		HOSE BIBB (NF= NON-FREEZE)
		REDUCER
		FIRE HYDRANT
		DROP INLET
		MANHOLE
		SEWER CLEAN OUT OR SEWER LATERAL
		UNDERGROUND ELECTRICAL
		OVERHEAD ELECTRICAL
		FIBER OPTIC LINE
		CABLE TELEVISION
		JOINT UTILITIES
		UNDERGROUND TELEMETRY LINE
		OVERHEAD TELEMETRY LINE
		UNDERGROUND TELEPHONE LINE
		OVERHEAD TELEPHONE LINE
		FIRE WATER LINE
		STEAM LINE
		WATER LINE
		SANITARY SEWER LINE
		STORM DRAIN LINE
		GAS LINE
		FORCE MAIN AND DIRECTION OF FLOW
		CULVERT
		POLE MOUNTED ROADWAY LUMINAIRE
		ITEM TO BE REMOVED
		ITEM TO BE ABANDONED IN PLACE
		WATER SERVICE— WM-1= SINGLE WM-2= DUAL
		PULL BOX AND DESIGNATION
		SIGN AND DESIGNATION

NOTES

1. CONTACT THE ENGINEER FOR SYMBOLS NOT LISTED.
2. THIS IS A STANDARD SHEET, THEREFORE, SOME SYMBOLS OR ABBREVIATIONS MAY APPEAR ON THIS SHEET WHICH DO NOT APPEAR ON THE PLANS.
3. SITE AND UTILITY SYMBOLS SHOWN ON THIS SHEET ARE NOT INTENDED TO REPRESENT THE PHYSICAL SCALE OR SHAPE OF ANY ITEMS. WHERE LARGE-SCALE PLANS ARE PRESENTED, THE SYMBOLS SHOWN HEREON MAY BE REPLACED BY DETAILS MORE SUITED TO THE DRAWING SCALE.

TOPOGRAPHIC LEGEND

PROPOSED EXISTING

		P.I. (POINT OF INTERSECTION)
		TEMPORARY BENCH MARK
		FINISH GRADE ELEVATION
		ELEVATION OF ORIGINAL GROUND
		RADIAL POINT
		FLOW LINE AND DIRECTION
		TOP OF CUT
		TOP OF FILL
		TOE OF CUT OR FILL
		CONTOUR LINE
		CONCRETE (IN PLAN)
		CONCRETE (IN SECTION)
		PAVEMENT
		ROCKS
		STUMPS
		TREES
		ROADS
		UTILITY POLE (PP=POWER POLE, TP= TEL POLE, JP=JOINT POLE)
		GUY WIRE
		FENCE
		BOUNDARY LIMITS, W/DESIGNATION
		CENTERLINE
		MARSH
		WETLAND
		SPRING
		TEST PIT AND DESIGNATION
		EXPLORATION BORE HOLE
		PROPERTY CORNER
		SURVEY MONUMENT
		CONTROL POINT
		DRIVEWAY

DETAIL AND SECTION DESIGNATION

SECTION (LETTER)
OR DETAIL (NUMERAL)
DESIGNATION

INDICATES SECTION OR
DETAIL TAKEN AND SHOWN
ON SAME SHEET

ON DRAWING WHERE SECTION
OR DETAIL IS TAKEN:

SHEET NUMBER WHERE SHOWN

ON DRAWING WHERE SECTION
OR DETAIL IS SHOWN:

SHEET NUMBER WHERE TAKEN

STANDARD DETAIL NUMBER
(DETAIL MAY BE SHOWN ON
ANY SHEET WITHIN THE
DRAWING SET)

RECORD DRAWING

THIS RECORD DRAWING HAS BEEN PREPARED, IN PART, ON THE BASIS OF INFORMATION COMPILED AND FURNISHED BY OTHERS AND NOT VERIFIED BY THE ENGINEER. THIS IS NOT A CERTIFIED DOCUMENT AS TO THE ORIGINAL DOCUMENT BUT AS TO THE REVISIONS TO THIS DRAWING ISSUED AND SEALED BY:

JARED S. O'BARR

C76125

ON 10/01/2015

THE RECORD DRAWING IS ONLY CERTIFIED AS TO THE REVISIONS. FIELD VERIFICATION OF CRITICAL FACTS AND DATA MUST BE MADE IF THIS DOCUMENT IS TO BE USED AS A BASIS FOR FUTURE WORK.



VERIFY SCALES
BAR IS ONE INCH ON ORIGINAL DRAWING
IF NOT ONE INCH ON THIS SHEET, ADJUST SCALES ACCORDINGLY

CONSULTING ENGINEERS & GEOLOGISTS, INC.
WWW.SHN-ENGR.COM
812 W. WABASH AVE.
EUREKA, CA. 95501
707-441-8855

DESIGN: JSO/PB
DRAWN: DR
CHECKED: CHK
APPROVED: APVD

NO. 1
DATE: 03/2016
REVISION: RECORD DRAWINGS
BY: PB

SHEET G-2
SEQ 2
DATE 10/2015
PROJ. NO. 014004.100

HUMBOLDT TRANSIT AUTHORITY
FUELING FACILITY PROJECT
133 V ST (APN 002-091-008)
STANDARD ABBREVIATIONS AND LEGENDS



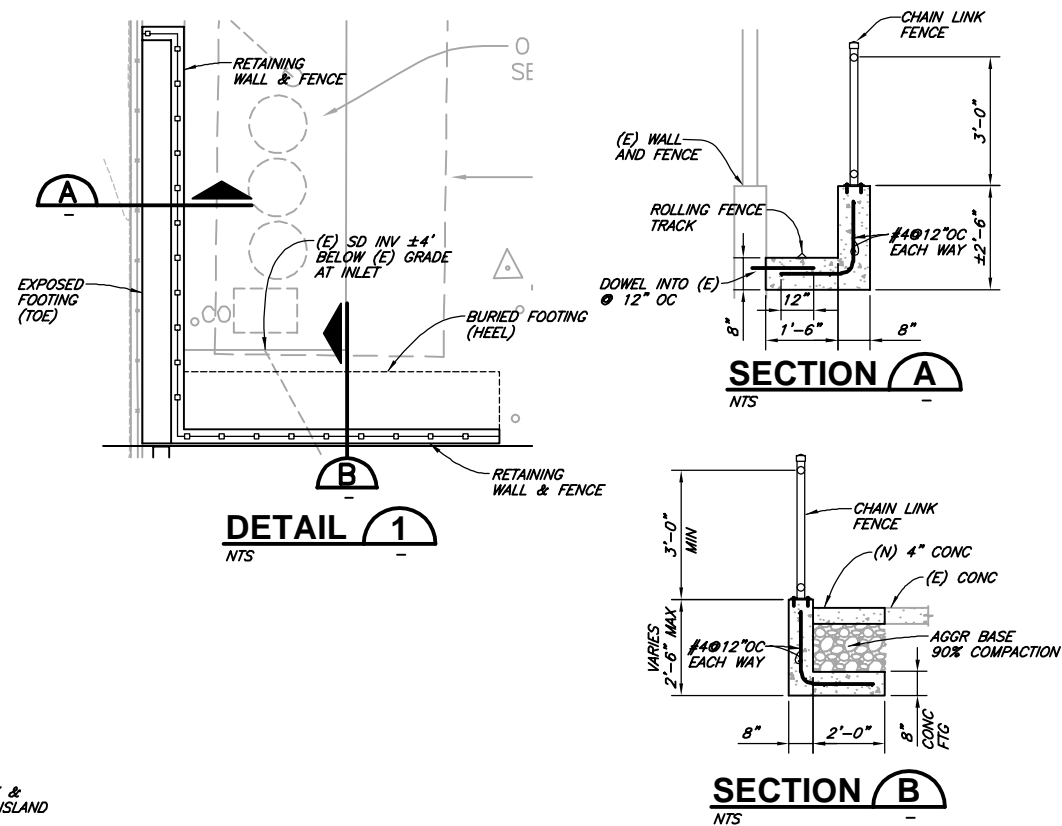
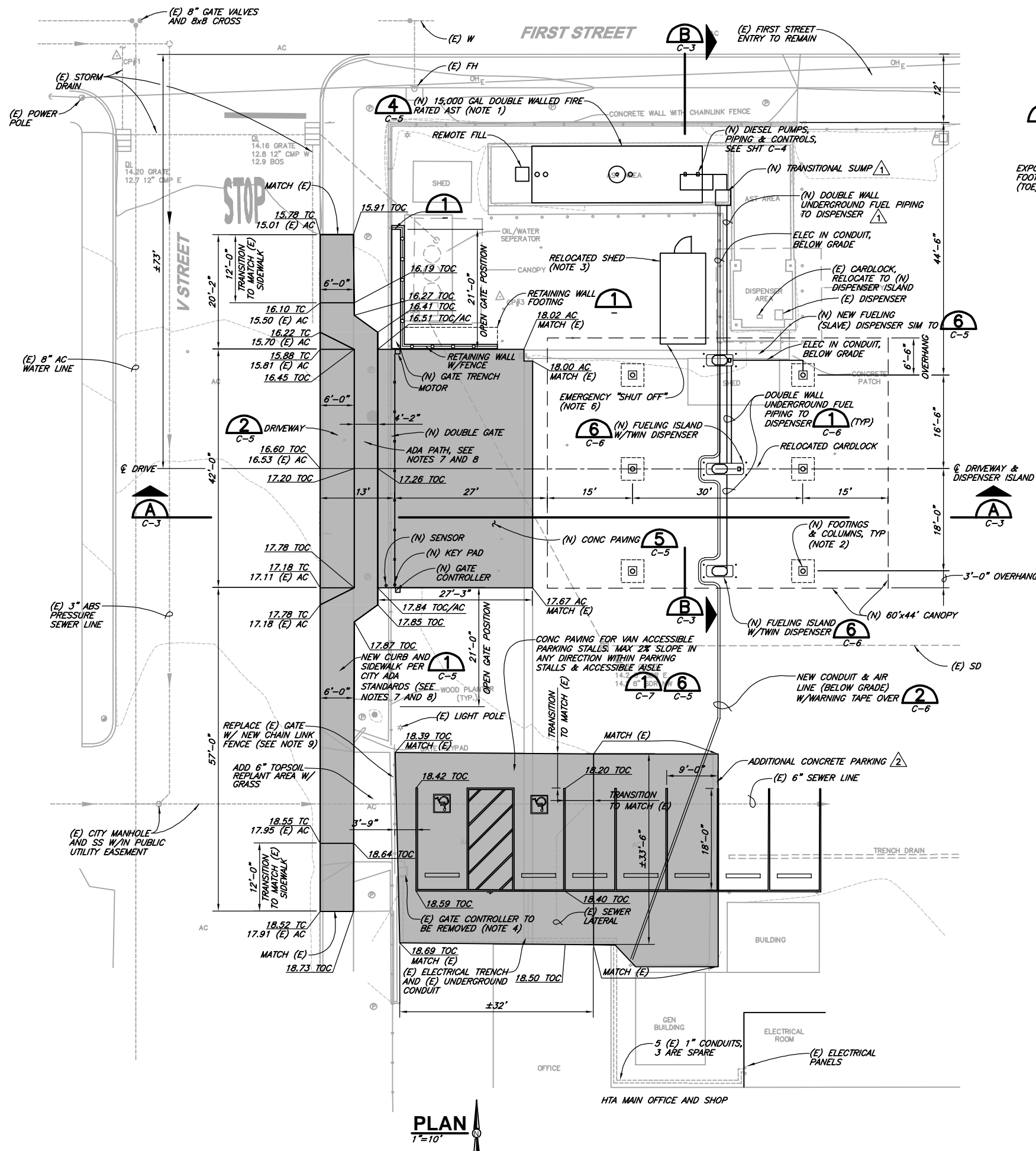
THIS RECORD DRAWING HAS BEEN PREPARED,
IN PART, ON THE BASIS OF INFORMATION COMPILED
AND FURNISHED BY OTHERS AND NOT VERIFIED
BY THE ENGINEER. THIS IS NOT A CERTIFIED DOCUMENT
AS TO THE ORIGINAL DOCUMENT BUT AS TO THE
REVISIONS TO THIS DRAWING ISSUED AND SEALED BY
JARED S. O'BARR
C76125
ON 10/01/2015
THE RECORD DRAWING IS ONLY CERTIFIED AS TO
THE REVISIONS. FIELD VERIFICATION OF CRITICAL FACTS
AND DATA MUST BE MADE IF THIS DOCUMENT IS
TO BE USED AS A BASIS FOR FUTURE WORK.

1. ALL WORK SHALL CONFORM TO THE CURRENT CALIFORNIA BUILDING CODE.
2. THE WORKING DRAWINGS ARE GENERALLY DIAGRAMMATIC, THEY DO NOT SHOW EVERY OFFSET, BEND OR ELBOW REQUIRED FOR INSTALLATION IN THE SPACE PROVIDED. THEY DO NOT SHOW EVERY DIMENSION, COMPONENT PIECE, SECTION, JOINT OR FITTING REQUIRED TO COMPLETE THE PROJECT. ALL LOCATIONS FOR WORK SHALL BE CHECKED AND COORDINATED WITH EXISTING CONDITIONS IN THE FIELD BEFORE BEGINNING CONSTRUCTION. EXISTING UNDERGROUND UTILITIES WITHIN THE LIMITS OF THE WORK SHALL BE VERIFIED AS TO CONDITION, SIZE AND LOCATION BY UNCOVERING, PROVIDED SUCH IS PERMITTED BY LOCAL PUBLIC AUTHORITIES WITH JURISDICTION, BEFORE BEGINNING CONSTRUCTION. CONTRACTOR SHALL NOTIFY ENGINEER OF ANY DISCREPANCIES.
3. THE CONTRACTOR SHALL SECURE ALL NECESSARY PERMITS PRIOR TO THE COMMENCEMENT OF CONSTRUCTION AND SHALL COMPLY WITH PERMIT REQUIREMENTS THROUGHOUT PROJECT CONSTRUCTION.
4. THE CONTRACTOR SHALL PROVIDE A COPY OF THE TRENCH PERMIT FROM THE CALIFORNIA DIVISION OF INDUSTRIAL SAFETY PRIOR TO THE EXCAVATION OF ANY TRENCH OVER FIVE FEET IN DEPTH.
5. CONTRACTOR SHALL PERFORM TRENCH WORK IN CONFORMANCE WITH THE CALIFORNIA DIVISION OF INDUSTRIAL SAFETY REQUIREMENTS. SAID SHALL CONFORM TO ALL APPLICABLE OCCUPATIONAL SAFETY AND HEALTH STANDARDS, RULES, REGULATIONS AND ORDERS ESTABLISHED BY THE STATE OF CALIFORNIA AND OTHER APPLICABLE AGENCIES.
6. CONTRACTOR AGREES THAT IN ACCORDANCE WITH GENERALLY ACCEPTED CONSTRUCTION PRACTICES, GENERAL CONTRACTOR WILL ASSUME SOLE AND COMPLETE RESPONSIBILITY FOR JOB SITE CONDITIONS DURING THE COURSE OF CONSTRUCTION OF THE PROJECT, INCLUDING SAFETY OF ALL PERSONS AND PROPERTY. ALL WORK AND EQUIPMENT SHALL COMPLY WITH THE CALIFORNIA DIVISION OF INDUSTRIAL SAFETY REQUIREMENTS. THIS REQUIREMENT SHALL BE MADE TO APPLY CONTINUOUSLY, AND NOT BE LIMITED TO NORMAL WORKING HOURS. CONTRACTOR FURTHER AGREES TO HOLD HARMLESS, INDEMNIFY AND DEFEND THE OWNER, THE ENGINEER AND HIS/HER CONSULTANTS.
7. THE CONTRACTOR SHALL INDEPENDENTLY REVIEW GROUND, TOPOGRAPHY AND VEGETATION CONDITIONS THROUGHOUT THE SITE, AND SHALL ASSUME THE RISK OF COMPLETING THE WORK SET OUT ON THESE PLANS, REGARDLESS OF ROCK, WATER TABLE OR OTHER CONDITIONS WHICH MAY BE ENCOUNTERED IN THE COURSE OF THE WORK.
8. ANY DISCREPANCY DISCOVERED BY THE CONTRACTOR IN THESE PLANS, OR ANY FIELD CONDITIONS DISCOVERED BY THE CONTRACTOR THAT MAY DELAY OR OBSTRUCT THE PROPER COMPLETION OF THE WORK SHOWN HEREIN SHALL BE BROUGHT TO THE ATTENTION OF THE OWNER AND THE ENGINEER IMMEDIATELY UPON DISCOVERY. SAID NOTIFICATION SHALL BE IN WRITING.
9. PAVED AREAS AT THE ACCESS POINTS SHALL BE SWEEPED OR VACUUMED AS OFTEN AS EACH DAY TO ELIMINATE TRACKING SOIL AND DEBRIS ONTO THE PUBLIC STREETS. ANY SOILS AND/OR DEBRIS, ROCK, GRAVEL, ETC. TRACKED ONTO PUBLIC STREET AS A RESULT OF THIS PROJECT SHALL BE REMOVED IMMEDIATELY. PAVED AREAS WITHIN THE RIGHT OF WAY SHALL BE LEFT IN A CLEANED CONDITION AT THE END OF EACH WORK DAY.
10. ALL UNDERGROUND IMPROVEMENTS SHALL BE INSTALLED TESTED AND APPROVED PRIOR TO PAVING.
11. THE CONTRACTOR SHALL NOT BEGIN EXCAVATING UNTIL ALL EXISTING UTILITIES HAVE BEEN MARKED IN THE FIELD. THE CONTRACTOR SHALL NOTIFY EACH APPLICABLE ENTITY AT LEAST 48 HOURS PRIOR TO COMMENCING WORK. CALL UNDERGROUND SERVICE ALERT (USA) TWO WORKING DAYS BEFORE DIGGING AT (800) 227-2600 FOR LOCATES.
12. GRADING AND CONSTRUCTION CONTRACTORS SHALL STOP WORK IMMEDIATELY IF CULTURAL RESOURCES ARE DISCOVERED DURING CONSTRUCTION AND NOTIFY THE OWNER AND THE ENGINEER.
13. THE CONTRACTOR SHALL GIVE THE INSPECTOR 48 HOURS ADVANCE NOTICE OF ANY CONSTRUCTION OR REQUIRED TESTING.
14. THE CONTRACTOR SHALL KEEP THE PROJECT SITE AND THE SURROUNDING AREAS CLEAN AND FREE OF DEBRIS.
15. SHOULD THE CONTRACTOR OR ANY OF HIS AGENTS OR EMPLOYEES ENCOUNTER OR DISCOVER MATERIALS WHICH APPEAR TO BE HAZARDOUS DURING THE PERFORMANCE OF THE WORK, THE CONTRACTOR SHALL INFORM THE ENGINEER IMMEDIATELY AND SUSPEND WORK IN THE AFFECTED AREA UNTIL THE ENGINEER HAS INSPECTED THE LOCATION AND MATERIALS IN QUESTION. SHOULD IT BE NECESSARY TO UNDERTAKE REMEDIATION, THE ENGINEER WILL GIVE WRITTEN NOTICE TO SUSPEND WORK IN THE AFFECTED AREA UNTIL THE PROPER COURSE OF ACTION HAS BEEN DETERMINED. OPERATIONS IN THE AFFECTED AREA SHALL BE RESUMED ONLY UPON WRITTEN NOTICE BY THE ENGINEER.
16. ALL SITE GRADING WILL BE INSPECTED BY THE ENGINEER. COMPACTION TESTING WILL BE CONDUCTED AFTER SUFFICIENT DENSITIES HAVE BEEN ACHIEVED IN THE CONTRACTOR'S OPINION. THE CONTRACTOR SHALL MAKE ALL REQUESTS FOR MATERIALS TESTING AT LEAST 48 HOURS IN ADVANCE. ANY SOILS THAT FAIL TO MEET THE REQUIRED COMPACTION LEVELS SHALL BE REMOVED, REPLACED AND RECOMPACTED. ALL COSTS ASSOCIATED WITH ACHIEVING COMPACTION STANDARDS SHALL BE INCLUDED IN THE CONTRACTOR'S ORIGINAL BID.
17. NO CHANGES OR MODIFICATIONS SHALL BE MADE TO THESE PLANS WITHOUT WRITTEN APPROVAL BY THE ENGINEER.
18. CONTRACTOR IS RESPONSIBLE FOR THE REMOVAL AND PROPER DISPOSAL OF ALL MATERIALS LISTED FOR DEMOLITION.
19. CONTRACTOR SHALL BECOME FAMILIAR WITH EXISTING UTILITIES ON SITE PRIOR TO DEMOLITION. CONTRACTOR SHALL COORDINATE ANY EFFORTS THAT MAY IMPACT UTILITY SERVICE WITH OWNER AND ENGINEER.
20. THE CITY OF EUREKA HAS A SEWER LINE BENEATH THE ABANDONED ALLEY WAY, CITY PERSONNEL NEED TO HAVE ACCESS TO THIS EASEMENT AT ALL TIMES.
21. CONTRACTOR TO OBTAIN ENCROACHMENT PERMIT FROM CITY PRIOR TO BLOCKING STREETS AND SIDEWALKS.
22. CONTRACTOR TO COORDINATE WITH LESSEE PRIOR TO STORING MATERIAL ON OR BLOCKING THEIR PARKING AREA.
23. CONTRACTOR SHALL INSTALL AN APPROVED BACKFLOW PREVENTOR BEFORE USING CITY WATER, SEE SPECIFICATIONS. ADDITIONALLY, BEFORE USING POTABLE WATER FROM THE HTA FACILITY, APPROVED BACKFLOW PREVENTION DEVICES OR METHODS WILL BE REQUIRED.

1. CONTRACTOR TO OBTAIN ENCROACHMENT PERMIT FROM THE CITY OF EUREKA PRIOR TO WORKING IN THE SIDEWALK AND STREET AREAS.
2. CONTRACTOR TO SAW CUT EXISTING CONCRETE SLAB, AND EXCAVATE FOR NEW ABOVEGROUND STORAGE TANK (AST) FOOTINGS (SEE SPECIFICATIONS). AST SUPPLIER TO PROVIDE DESIGN AND CALCULATIONS COMPLETED BY A LICENSED ENGINEER WHO IS REGISTERED IN THE STATE OF CALIFORNIA.
3. CONTRACTOR TO SAW CUT EXISTING SLAB TO FULL DEPTH (6 PLACES), AND EXCAVATE FOR NEW CANOPY FOOTINGS (SEE SPECIFICATIONS). SIZE OF FOOTINGS TO BE DETERMINED BY CANOPY MANUFACTURER.
4. PRIOR TO RELOCATING COUNTING SHED ELECTRICAL CABLES AND POWER WILL NEED TO BE DISCONNECTED AND EXTENDED, TO NEW LOCATION.
5. UNDERGROUND WATER PIPING EXISTS OUT TO EXISTING DISPENSING AREA, BE EXTRA CAREFUL WHEN EXCAVATING OUT CANOPY FOOTINGS.
6. EXISTING DRAINAGE INLETS TO BE PROTECTED WITH APPROPRIATE BMP'S DURING DEMOLITION AND CONSTRUCTION ACTIVITIES.
7. DEMOLITION CONSISTS OF REMOVAL AND DISPOSAL OF EXISTING MATERIAL TO DEPTH REQUIRED TO CONSTRUCT NEW FACILITIES. CONTRACTOR SHALL SCARIFY AND RECOMPACT MIN 6" OF SUBGRADE MATERIALS TO MIN 90% RELATIVE COMPACTION.
8. CONTRACTOR TO PROVIDE EXCAVATION SCHEDULE TO HTA AND ENGINEER TO ALLOW FOR CULTURAL MONITORING (48 HRS), PER THE APPROVED CULTURAL RESOURCES AND INADVERTENT DISCOVERY PLAN. EXCAVATION WILL OCCUR IN A MANNER TO ALLOW FOR SIFTING THROUGH THE MATERIAL TO OBSERVE FOR CULTURAL MONITORING AND A POSSIBLE DELAY COULD OCCUR IF CULTURAL RESOURCES ARE DISCOVERED.
9. THIS IS A "DESIGN-BUILD" TYPE PROJECT AND IS DEPENDENT UPON THE MATERIALS AND SYSTEMS APPROVED AND ACCEPTED FOR INSTALLATION. CONTRACTOR SHALL COORDINATE ALL INSTALLATION DETAILS WITH VENDORS AND HTA, FOR A SYSTEM COMPLETE IN-PLACE AS APPROVED BY HTA AND ENGINEER.



SAVED: 9/30/2020 9:00 PM DIEGA, PLOTTED: 1/31/2024 2:24 PM NEWELL, CHRIS
LEUREKAS\NEW Projects\2014\014004-HTA-AST-Rep Dwg\RECORD-DRAWINGS\014004-SITE-PLAN.dwg



NOTES:

- HTA TO PURCHASE 15,000 GALLON DOUBLE WALL FIRE RATED AST. CONTRACTOR TO CONSTRUCT NEW FOOTINGS PER TANK MANUFACTURER ENGINEER APPROVED DRAWINGS; AND SET TANK (SEE SPECIFICATIONS).
- CONTRACTOR TO COORDINATE THE CONSTRUCTION OF CANOPY FOOTINGS WITH CANOPY MANUFACTURER.
- CONTRACTOR TO RELOCATE COUNTING SHED, WHICH WILL INCLUDE INSTALLING ADDITIONAL ELECTRICAL CONDUIT AND WIRE, AND CONTROL CABLES TO NEW LOCATION.
- REMOVE EXISTING GATE, MOTOR AND CONTROL POWER. REUSE EXISTING CIRCUIT, AND RECONNECT NEW GATE MOTORS, KEY PAD, AND CONTROLS.
- PAINT CURB RED AT EACH SIDE OF NEW DRIVEWAY PER CITY REQUIREMENTS.
- SIGN AND EMERGENCY SHUT OFFS TO SAY "EMERGENCY SHUT OFF". ALSO POST EMERGENCY CONTACT LIST NEARBY.
- THE CONTRACTOR SHALL REQUEST A SIDEWALK SURVEY AND APPROVAL OF CONCRETE FORMS FROM THE CITY ENGINEERING DEPARTMENT PRIOR TO PLACING CONCRETE. SEE CITY RESOLUTIONS 6249 AND 6240.
- CONTRACTOR SHALL OBTAIN AN ENCROACHMENT PERMIT FROM THE CITY ENGINEERING DEPARTMENT BEFORE USING ANY EQUIPMENT OR BEGINNING ANY WORK WITHIN CITY RIGHT-OF-WAY ON 1ST, 2ND, V OR W STREETS, INCLUDING SIDEWALKS. CONTRACTOR.
- NEW CHAIN LINK FENCE THAT IS REPLACING THE EXISTING GATE SHALL MATCH THE EXISTING FENCE AND HAVE REMOVABLE FENCE AND POSTS AS REQUIRED BY CITY TO ALLOW PUE ACCESS. THERE IS AN EXISTING KNOX BOX AT HTA GATE, COORDINATE WITH CITY STAFF.

SURVEY NOTES:

NOT ALL SYMBOLS ARE USED IN ALL DRAWINGS.
ELEVATIONS ARE BASED ON THE TOP OF CURB AT THE
SOUTHWEST CURB RETURN AT THE INTERSECTION OF 1ST AND V
STREETS (EL = 15.00').

PROJECT NORTH IS THE BACK OF WALK ON THE EAST SIDE OF V
STREET.

COORDINATES ARE BASED ON CONTROL POINTS #1 & #2, MAG
NAILS WITH SHINERS IN 1ST STREET AS SHOWN.

CP	NORTHING	EASTING	ELEVATION
#1	5000.00'	10000.00'	14.44'
#2	5004.46'	10206.73'	14.04'

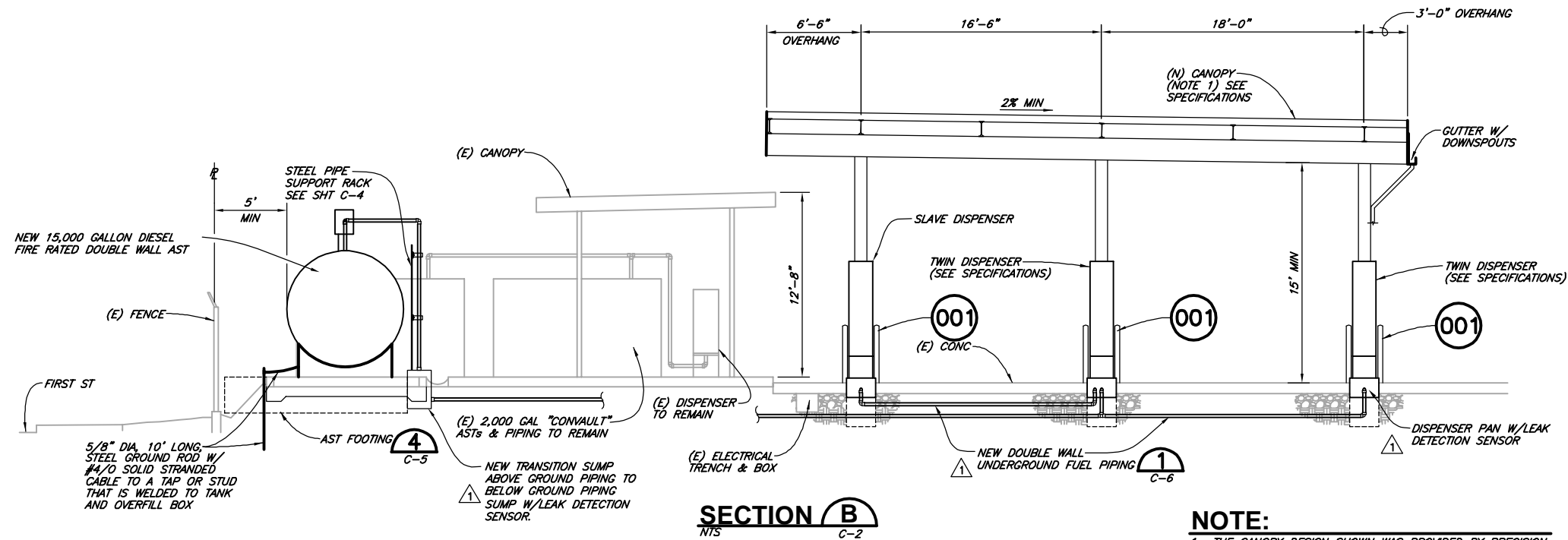
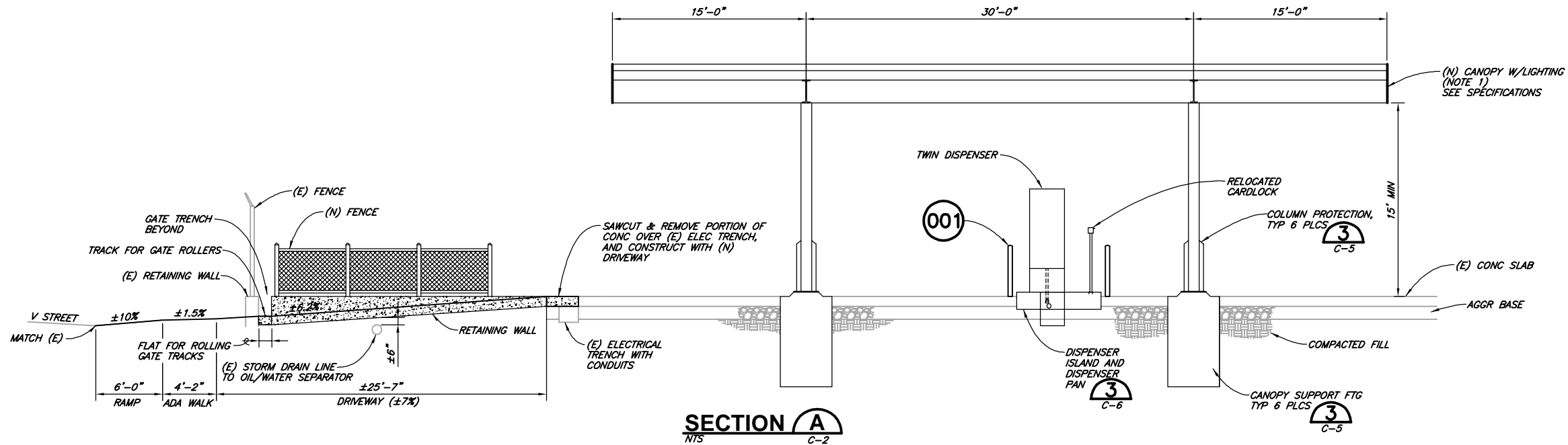
RECORD DRAWING

THIS RECORD DRAWING HAS BEEN PREPARED,
IN PART, ON THE BASIS OF INFORMATION COMPILED
AND FURNISHED BY OTHERS AND NOT VERIFIED BY
THE ENGINEER. THIS IS NOT A CERTIFIED DOCUMENT
AS TO THE ORIGINAL DOCUMENT BUT AS TO THE
REVISIONS TO THIS DRAWING ISSUED AND SEALED BY:
JARED S. O'BARR
C76125
ON 10/01/2015
THE RECORD DRAWING IS ONLY CERTIFIED AS TO
THE REVISIONS. FIELD VERIFICATION OF CRITICAL FACTS
AND DATA MUST BE MADE IF THIS DOCUMENT IS
TO BE USED AS A BASIS FOR FUTURE WORK.



VERIFY SCALES B&S IS ONE INCH ON ORIGINAL DRAWING IF NOT ONE INCH ON THIS SHEET, ADJUST SCALES ACCORDINGLY		CONSULTING ENGINEERS & GEOLOGISTS, INC. WWW.SHN-ENGR.COM 812 W. WABASH AVE. EUREKA, CA. 95501	
DESIGN	ISO/PB	DR	CDN
CHK	MEL	APVD	
DATE	02/2016	DATE	01/2016
NO.	2	NO.	1
REVISION		REVISION	
HUMBOLDT TRANSIT AUTHORITY FUELING FACILITY PROJECT 133 V ST (APN 002-091-008) EUREKA, CALIFORNIA			
SITE PLAN			
SHEET	C-2		
SEQ	4		
DATE	10/2015		
PROJ. NO.	014004.100		

SAVED: 9/30/2020 9:00 PM DIVEGA, PLOTTED: 1/31/2024 2:24 PM NEWELL, CHRIS
LEUREKASIPVNEW\Projects\2014\014004-HTA-AST-Rep\Draws\RECORD-DRAWINGS\014004-SECTIONS.dwg



NOTE:

1. THE CANOPY DESIGN SHOWN WAS PROVIDED BY PRECISION CANOPY; CALL WES ROBISON (801) 391-2619. AN ALTERNATE "APPROVED EQUAL" MAY BE USED TO DESIGN AND CONSTRUCT THE CANOPY (SEE SPECIFICATIONS).

RECORD DRAWING

THIS RECORD DRAWING HAS BEEN PREPARED, IN PART, ON THE BASIS OF INFORMATION COMPILED AND FURNISHED BY OTHERS AND NOT VERIFIED BY THE ENGINEER. THIS IS NOT A CERTIFIED DOCUMENT AS TO THE ORIGINAL DOCUMENT BUT AS TO THE REVISIONS TO THIS DRAWING ISSUED AND SEALED BY: KENNETH JEFFREY NELSON C76125

ON 10/01/2015
THE RECORD DRAWING IS ONLY CERTIFIED AS TO THE REVISIONS. FIELD VERIFICATION OF CRITICAL FACTS AND DATA MUST BE MADE IF THIS DOCUMENT IS TO BE USED AS A BASIS FOR FUTURE WORK.



VERIFY SCALES
B.B. IS ONE INCH ON ORIGINAL DRAWING
IF NOT ONE INCH ON THIS SHEET, ADJUST SCALES ACCORDINGLY

CONSULTING ENGINEERS & GEOLOGISTS, INC.
WWW.SHN-ENGR.COM
812 W. WABASH AVE.
EUREKA, CA. 95501
707-441-8855



DESIGN: JSD/PB
DR: CDR
CHK: MEL
APVD: [Signature]
UNDERGROUND PIPING & ELECTRICAL CONDUIT
PB

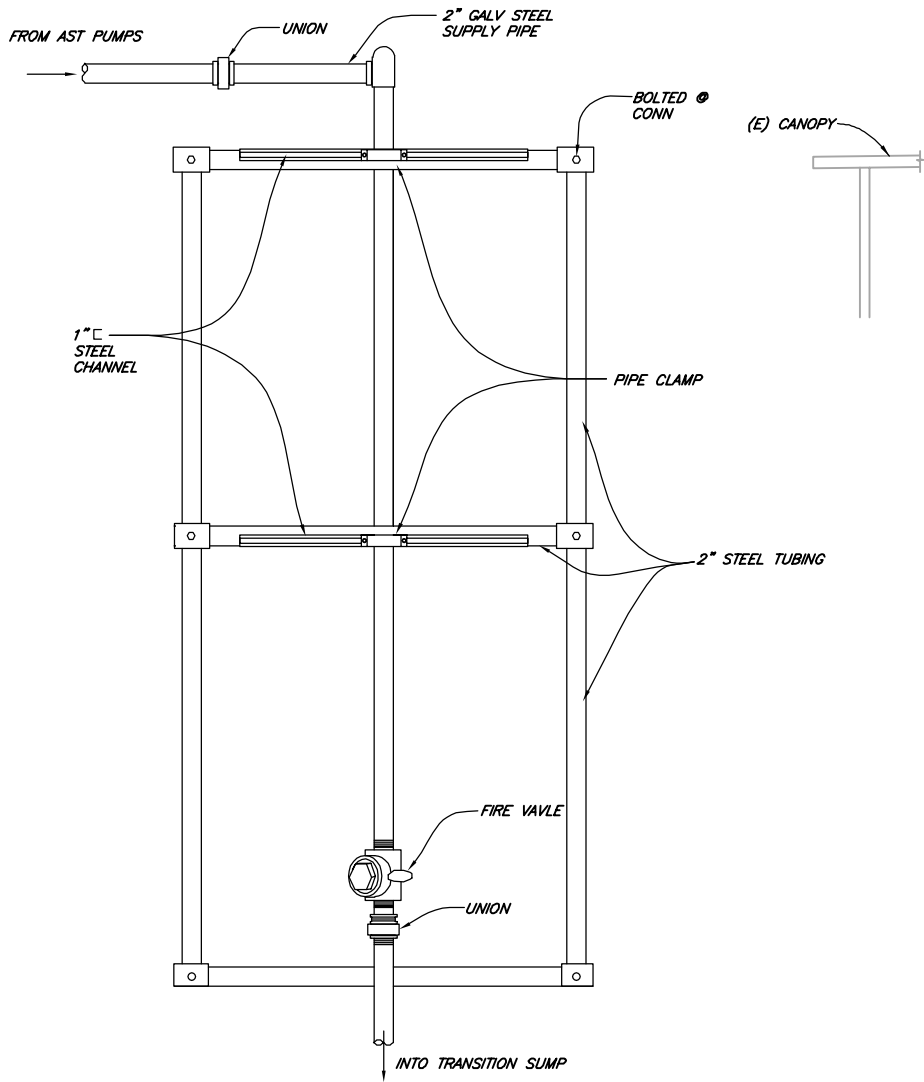
1/2016
DATE
NO.

HUMBOLDT TRANSIT AUTHORITY
FUELING FACILITY PROJECT
133 V ST (APN 002-091-008) EUREKA, CALIFORNIA
SECTIONS

SHEET
C-3
SEQ 5
DATE 10/2015
PROJ. NO. 014004.100

SAVED: 9/30/2020 9:00 PM DIVEGA, PLOTTED: 1/31/2024 2:24 PM NEWELL, CHRIS

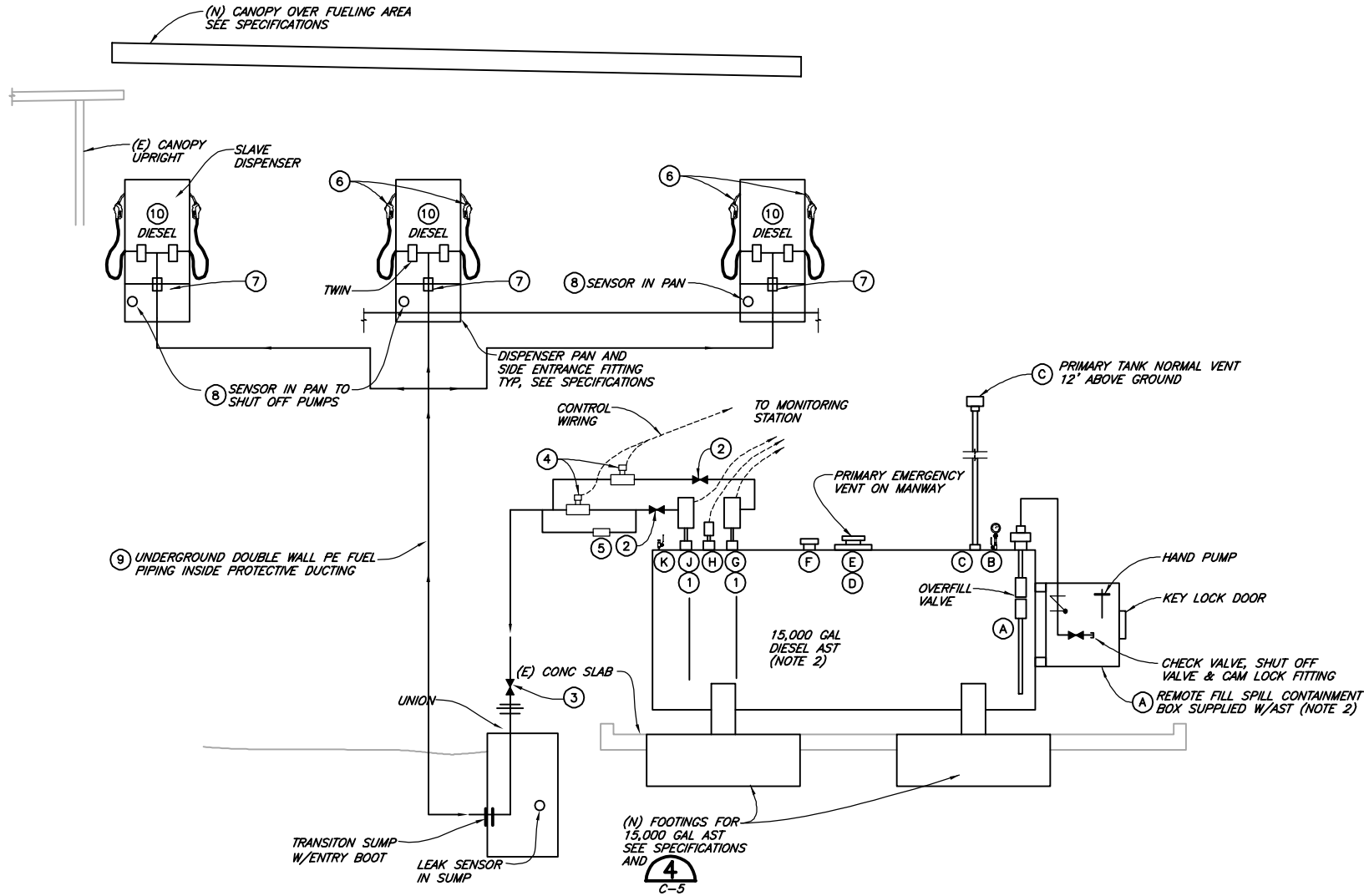
\\LEUREKAS\PROJECTS\Projects\2014\014004-HTA-AST-Rep\Draws\RECORD-DRAWINGS\014004-SCHEM.dwg



STEEL SUPPORT RACK
NTS

PIPING & VALVE LEGEND

- ① JET VARIABLE SPEED PUMP, FE PETRO SUBMERSIBLE PUMP 1STM-2 HP VARIABLE SPEED (90-151)
- ② GATE VALVE AND OR CHECK VALVE MORRISON BROS 346 SERIES
- ③ 2" FIRE VALVE (EXTERNAL EMERGENCY VALVE) MORRISON BROS 346 DI-0500 AV (OPW 10 SERIES EMERGENCY SHUT OFF VAVLES)
- ④ 2" SOLENOID VALVE MORRISON BROS 710-0200 IV
- ⑤ 1/2" EXPANSION RELIEF VALVE 40-PSI MORRISON BROS 78DI-0200 AV
- ⑥ CURB HOSE, NOZZLE (TYP) EMCO WHEATON POSI LOCK NOZZLES (2) W/BREAKAWAY, SWIVEL
- ⑦ FLEX-ING SWIVELS-VALVES-MORRISON BROS VALVES
- ⑧ INCON LEAK DETECTION/MONITORING (FRANKLIN FUELING SYSTEMS)
- ⑨ ADVANCED POLYMER TECH 2" IN SC PRESS PIPE-4" IN XP PIPE DUCTING
- ⑩ 2 WAYNE J/G7237D ULTRA HIGH SPEED TWIN HOSE DISPENSERS W/EMERGENCY SHUT OFF SWITCH



SCHEMATIC
NTS

AST APPURTENANCE LEGEND

- (A) 6" FPT PORT-4" DROP TO OVERFILL VALVE & DROP TUBE-MORRISON BROS 2"x12" 3" TO REMOTE FILL (SPILL CONTAINMENT BOX) ON AST
- (B) 4" FPT PORT-LEVEL CLOCK GAUGE-81B SERIES
- (C) 4" FPT PORT, REDUCER FITTING-3" STEEL PIPE W/PRIMARY VENT CAP
- (D) 24" MANWAY AND COVER
- (E) 8" EMERGENCY VENT (PRIMARY TANK ON MANWAY) MORRISON BROS MODEL 244
- (F) 8" EMERGENCY VENT (SECONDARY TANK) MORRISON BROS MODEL 244
- (G) 4" FPT PORT MINI-JET PUMP
- (H) 4" FPT (INVENTORY)
- (J) 4" FPT PORT MINI-JET PUMP
- (K) 2" FPT INTERSTITIAL MONITORING PORT (CONNECT INTO MONITORING SYSTEM)

NOTES:

1. PRODUCT AND MODEL NUMBERS USED FOR DESIGN MAY BE SUBSTITUTED IF "APPROVED EQUAL". SEE SPECIFICATIONS.
2. THE 15,000 GALLON ABOVEGROUND STORAGE TANK (AST), WILL BE PURCHASED BY HTA, AND INSTALLED BY CONTRACTOR. THE AST TO BE SUPPLIED IS A MODERN WELDING FIREGUARD UL 2085 PROTECTED, DOUBLE WALL CYLINDRICAL STEEL TANK. CALL PME EQUIPMENT SALES RALPH E. QUINONES (510) 265-1289.
3. THE AST HARDWARE, PUMPS, PIPING, CONTROLS, AND VALVES WERE SELECTED BY FRANKLIN FUEL SYSTEMS, CALL MATT SCHUESLER (925) 785-2740.
4. THE DISPENSERS AND APPURTENANCES WERE SELECTED TO MATCH PUMPS AND PIPING. FOR WAYNE DISPENSING SYSTEMS, CALL THOMAS GLAHN (267) 664-2425.

RECORD DRAWING

THIS RECORD DRAWING HAS BEEN PREPARED, IN PART, ON THE BASIS OF INFORMATION COMPILED AND FURNISHED BY OTHERS AND NOT VERIFIED BY THE ENGINEER. THIS IS NOT A CERTIFIED DOCUMENT AS TO THE ORIGINAL DOCUMENT BUT AS TO THE REVISIONS TO THIS DRAWING ISSUED AND SEALED BY:
JARED S. O'BARR
C76125
ON 10/1/2015
THE RECORD DRAWING IS ONLY CERTIFIED AS TO THE REVISIONS. FIELD VERIFICATION OF CRITICAL FACTS AND DATA MUST BE MADE IF THIS DOCUMENT IS TO BE USED AS A BASIS FOR FUTURE WORK.

STATE OF CALIFORNIA

CIVIL

No. 76125



VERIFY SCALES
B/B IS ONE INCH ON ORIGINAL DRAWING
IF NOT ONE INCH ON THIS SHEET, ADJUST SCALES ACCORDINGLY

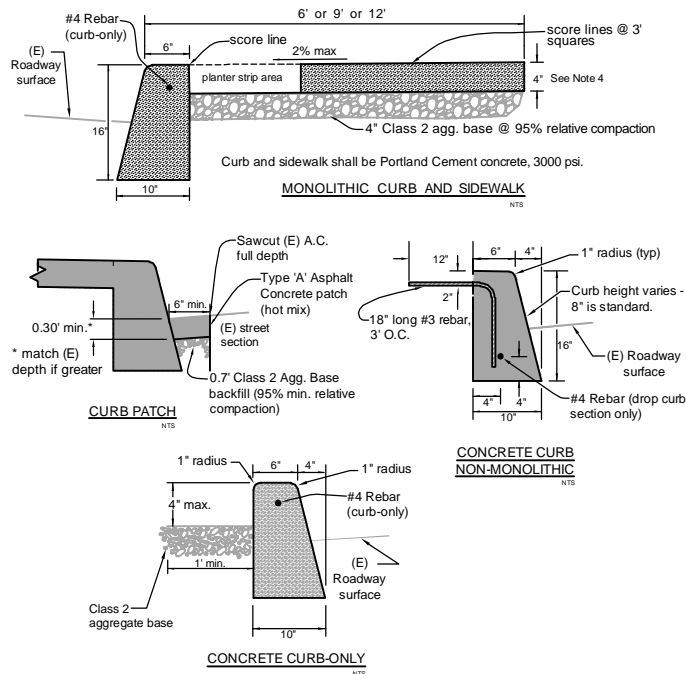
0 1 1"

CONSULTING ENGINEERS & GEOLOGISTS, INC.
WWW.SHN-ENGR.COM
812 W. WABASH AVE.
EUREKA, CA. 95501
707-441-8855

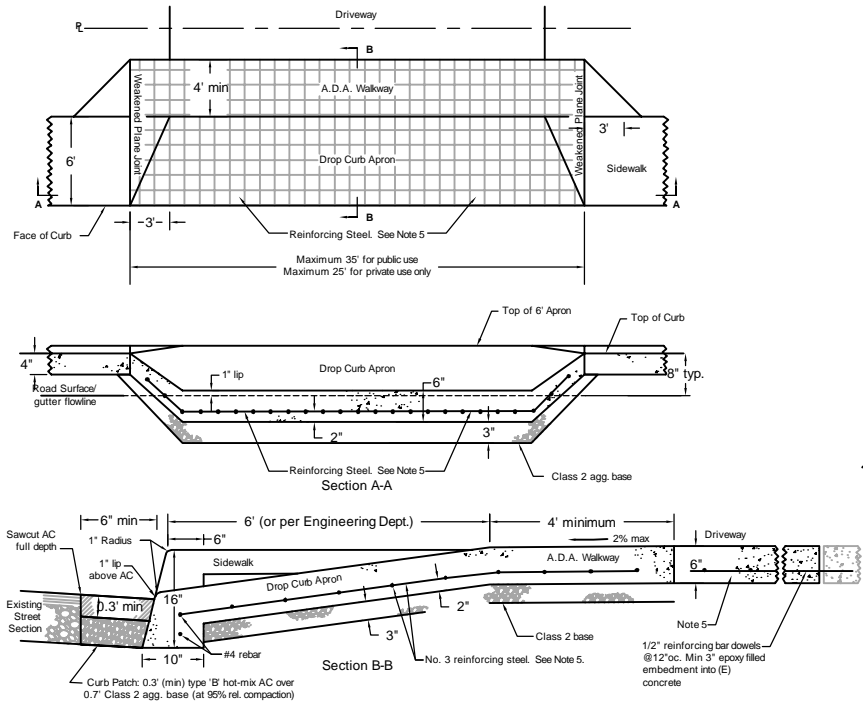
DESIGN	ISO/PB	DR	CDN	CHK	MEL	APVD
DATE	04/2016	DATE	1/2016	NO.	1	NO.
REVISION	PIPE RACK PIPING & SUMPS BELOW GRADE	BY	PB	BY	PB	BY
SHEET	C-4	SEQ	6	DATE	10/2015	PROJ. NO.
HUMBOLDT TRANSIT AUTHORITY FUELING FACILITY PROJECT 133 V ST (APN 002-091-008) EUREKA, CALIFORNIA						014004.100

FUELING SYSTEM SCHEMATICS

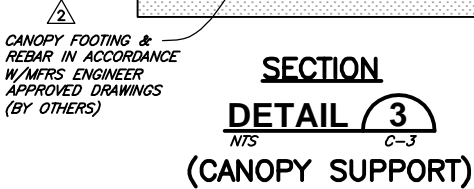
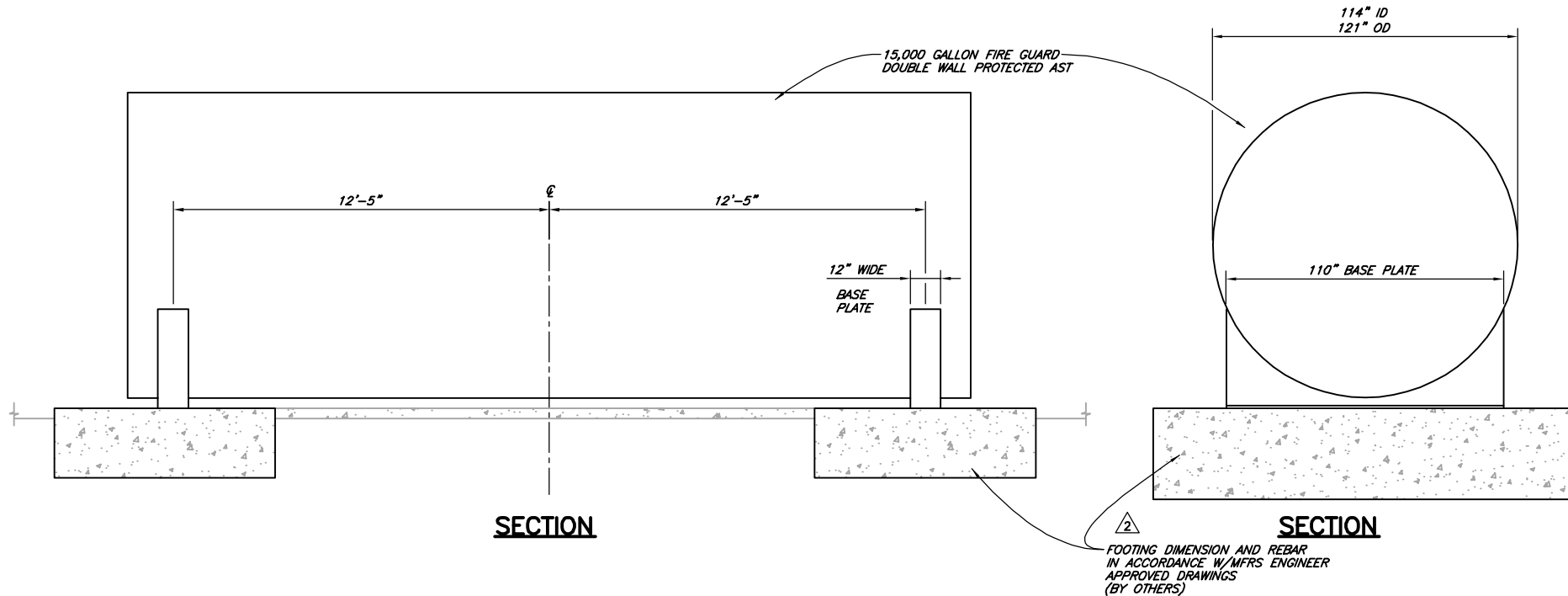
SAVED: 9/30/2020 9:00 PM DIEGA, PLOTTED: 1/31/2024 2:24 PM NEWELL, CHRIS
LEUREKAS\NEW Projects\2014\014004-HTA-AST-Rep Drawings\RECORD-DRAWINGS\014004-DTL5.dwg



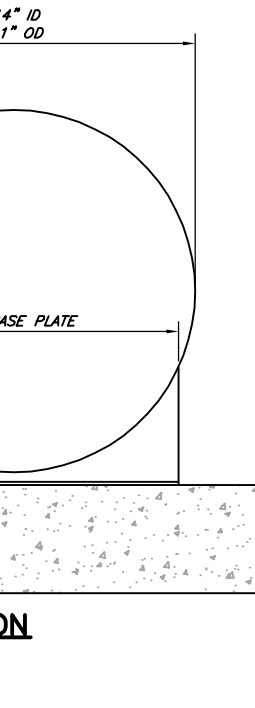
- NOTES:**
- Refer to City Resolution No. 6219 for additional information regarding concrete curb and sidewalk specifications.
 - All existing sidewalk areas being replaced shall be sawcut along and replaced to the nearest scoreline. Thoroughly tack coat all vertical surfaces prior to paving with AC.
 - Forms shall extend the full depth of the face of curb.
 - Sidewalk constructed within the radius of street intersections shall have a minimum thickness of 6" and be finished to appropriate ADA standards.
 - Weakened plane joints shall be installed in all sidewalks and curbs at intervals between 10' and 15', at the extension of property lines at street intersections, at both ends of all drop curb entrances, and at the property line where concrete is continuous across the property line. Weakened plane joints shall be installed in the curbs continuously with the weakened plane joints in the adjacent sidewalk.



- Notes:**
- See Concrete Curb and Sidewalk detail drawing for details.
 - Refer to City Resolution No. 6219 for additional information regarding concrete curb and sidewalk specifications.
 - All existing sidewalk areas being replaced shall be sawcut along and replaced to the nearest scoreline.
 - Where (N) sidewalk or driveway meets the (E) sidewalk or driveway, the (E) sidewalk or driveway shall have No. 3 rebar doweled and epoxied into it (minimum embedment length = 3") at 3' O.C. with a minimum of 12" rebar exposed.
 - Reinforcing steel for commercial driveway shall be either No. 3 rebar at 12" E.W. or 6" x 6" No. 10 welded wire mesh.



CANOPY FOOTING & REBAR IN ACCORDANCE W/MFRS ENGINEER APPROVED DRAWINGS (BY OTHERS)



FOOTING DIMENSION AND REBAR IN ACCORDANCE W/MFRS ENGINEER APPROVED DRAWINGS (BY OTHERS)

COLUMN PROTECTION (SEE SPECIFICATIONS)

PLATE, LEVELING BOLTS, & NUTS

CONC LEVELING COARSE

4" DIA CMP

9'±

1'-6"

3" MIN

4'-0" TYP

2'-8" MIN

6" SCHED 40 STL PIPE

DOME CONCRETE AT PIPE

FINISHED GRADE TOP OF CONCRETE OR ASPHALT

CONCRETE

NOTE:

PRIME ENTIRE POST WITH 2 COATS EXTERIOR PRIMER. PAINT EXPOSED SURFACE WITH 2 COATS TRAFFIC YELLOW ENAMEL.

TYPE 1

GUARD POST 001

NTS

ELASTOMERIC SEALANT

JOINT FILLER

#3 REBAR @ 12" EW

GROUT SOLID W/SIMPSON ET22 EPOXY ADHESIVE

7"

PLASTIC DOWEL CAP

SCARIFY AND COMPACT TOP 6" OF SUBGRADE TO 90% RELATIVE COMPACTION

3/4" EPOXY COATED DOWEL @ 12" OC

COAT THIS HALF OF BAR W/BITUMINOUS MASTIC TO PREVENT BOND

(E) SLAB

NOTES:

1. CONCRETE SHALL HAVE A MINIMUM COMPRESSIVE STRENGTH OF 4,000 PSI.

2. MAXIMUM SPACING BETWEEN CONTRACTION JOINTS SHALL BE 12 FEET EACH WAY.

3. CONCRETE SHALL HAVE AN AIR CONTENT OF 4% MIN.

4. EXISTING SLAB TO BE SAW CUT AT MATCH POINT.

5. REINFORCEMENT SHOULD BE INTERRUPTED AT CONTRACTION JOINTS.

DETAIL 5

NTS C-2

ELASTOMERIC SEALANT

JOINT FILLER

DOWL 2 12" OC

(E) SLAB

SCARIFY AND COMPACT TOP 6" OF SUBGRADE TO 90% RELATIVE COMPACTION

NOTES:

1. CONCRETE SHALL HAVE A MINIMUM COMPRESSIVE STRENGTH OF 4,000 PSI.

2. MAXIMUM SPACING BETWEEN CONTRACTION JOINTS SHALL BE 10 FEET EACH WAY.

3. CONCRETE SHALL HAVE AN AIR CONTENT OF 4% MIN.

4. EXISTING SLAB TO BE SAW CUT AT MATCH POINT.

DETAIL 6

NTS C-2

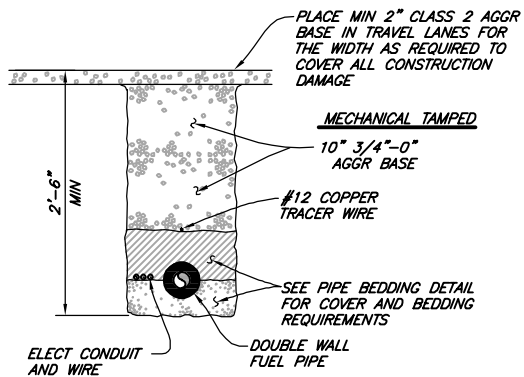
RECORD DRAWING

THIS RECORD DRAWING HAS BEEN PREPARED, IN PART, ON THE BASIS OF INFORMATION COMPILED AND FURNISHED BY OTHERS AND NOT VERIFIED BY THE ENGINEER. THIS IS NOT A CERTIFIED DOCUMENT AS TO THE ORIGINAL DOCUMENT BUT AS TO THE REVISIONS TO THIS DRAWING ISSUED AND SEALED BY: JARED S. O'BARR C76125 ON 10/01/2015 THE RECORD DRAWING IS ONLY CERTIFIED AS TO THE REVISIONS. FIELD VERIFICATION OF CRITICAL FACTS AND DATA MUST BE MADE IF THIS DOCUMENT IS TO BE USED AS A BASIS FOR FUTURE WORK.

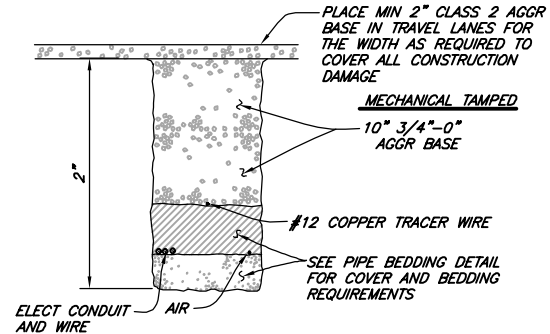


VERIFY SCALES	BAR IS ONE INCH ON ORIGINAL DRAWING	IF NOT ONE INCH ON THIS SHEET, ADJUST SCALES ACCORDINGLY
CONSULTING ENGINEERS & GEOLOGISTS, INC.	WWW.SHN-ENGR.COM	812 W. WABASH AVE. EUREKA, CA. 95501
CDN	PB	BY
FOOTINGS	RECORD DRAWINGS	REVISION
04/2016	3/2016	DATE
2	1	NO.
DSGN	ISO/PB	DR
CDN	CHK	MEL
APVD		
HUMBOLDT TRANSIT AUTHORITY FUELING FACILITY PROJECT	133 V ST (APN 002-091-008) EUREKA, CALIFORNIA	DETAILS 1
SHEET	C-5	SEQ 7
DATE	10/2015	PROJ. NO. 014004.100

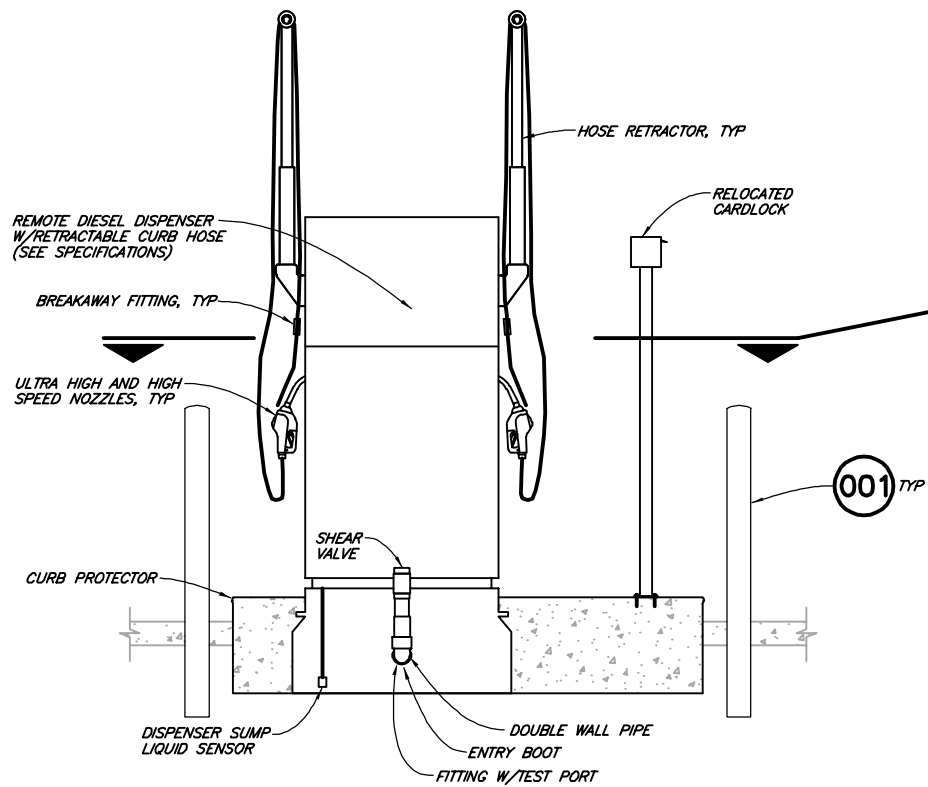
SAVED: 9/30/2020 9:00 PM DIVEGA, PLOTTED: 1/31/2024 2:24 PM NEWELL, CHRIS
\\LEUREKAS\NEW\Projects\2014\014004-HTA-AST-Rep\Draws\RECORD-DRAWINGS\014004-DTLS.dwg



DETAIL 1
NTS C-2
(TYPICAL TRENCH)

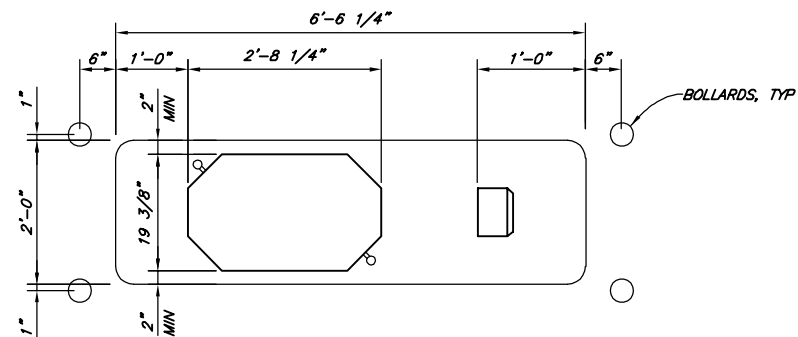


DETAIL 2
NTS C-2
(TYPICAL TRENCH)



SECTION

DETAIL 3
NTS C-3
(DISPENSER ISLAND)



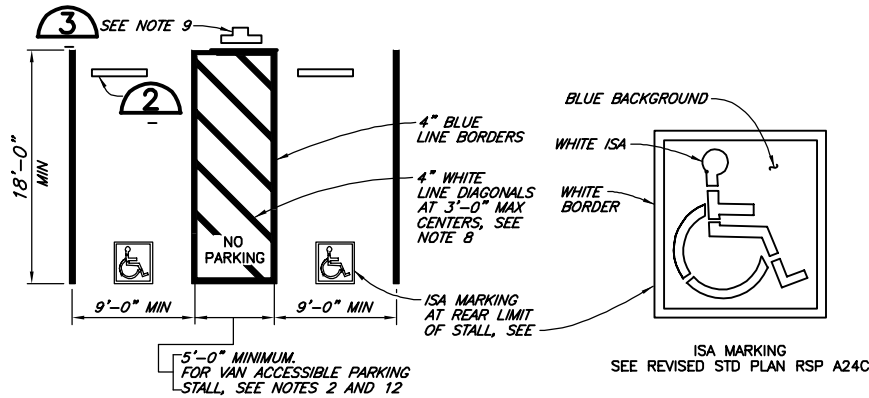
PLAN

RECORD DRAWING
THIS RECORD DRAWING HAS BEEN PREPARED, IN PART, ON THE BASIS OF INFORMATION COMPILED AND FURNISHED BY OTHERS AND NOT VERIFIED BY THE ENGINEER. THIS IS NOT A CERTIFIED DOCUMENT AS TO THE ORIGINAL DOCUMENT BUT AS TO THE REVISIONS TO THIS DRAWING ISSUED AND SEALED BY:
JARED S. O'BARR
C76125
ON 10/01/2015
THE RECORD DRAWING IS ONLY CERTIFIED AS TO THE REVISIONS. FIELD VERIFICATION OF CRITICAL FACTS AND DATA MUST BE MADE IF THIS DOCUMENT IS TO BE USED AS A BASIS FOR FUTURE WORK.



VERIFY SCALES		B.B. IS ONE INCH ON ORIGINAL DRAWING		IF NOT ONE INCH ON THIS SHEET, ADJUST SCALES ACCORDINGLY	
CONSULTING ENGINEERS & GEOLOGISTS, INC.		WWW.SHN-ENGR.COM		707-441-8855	
812 W. WABASH AVE.		EUREKA, CA. 95501			
RECORD DRAWINGS		PB		BY	
REVISION		DATE		NO.	
03/2016		1			
HUMBOLDT TRANSIT AUTHORITY FUELING FACILITY PROJECT		133 V ST (APN 002-091-008) EUREKA, CALIFORNIA		DETAILS 2	
SHEET		C-6		SEQ 8	
DATE		10/2015		PROJ. NO.	
				014004.100	

11/10/2020 9:00 PM DIVEGA, PLOTTED: 1/31/2024 2:24 PM NEWELL, CHRIS
 11/10/2020 9:00 PM DIVEGA, PLOTTED: 1/31/2024 2:24 PM NEWELL, CHRIS
 11/10/2020 9:00 PM DIVEGA, PLOTTED: 1/31/2024 2:24 PM NEWELL, CHRIS



SIGN R99 (CA)



PLAQUE R99B (CA)

SIGN R99 (CA) WITH PLAQUE R99B (CA)
SEE NOTE 6



SIGN R99C (CA)

MINIMUM FINE \$250

SEE NOTE 6



SIGN R100B (CA)

SEE NOTE 9

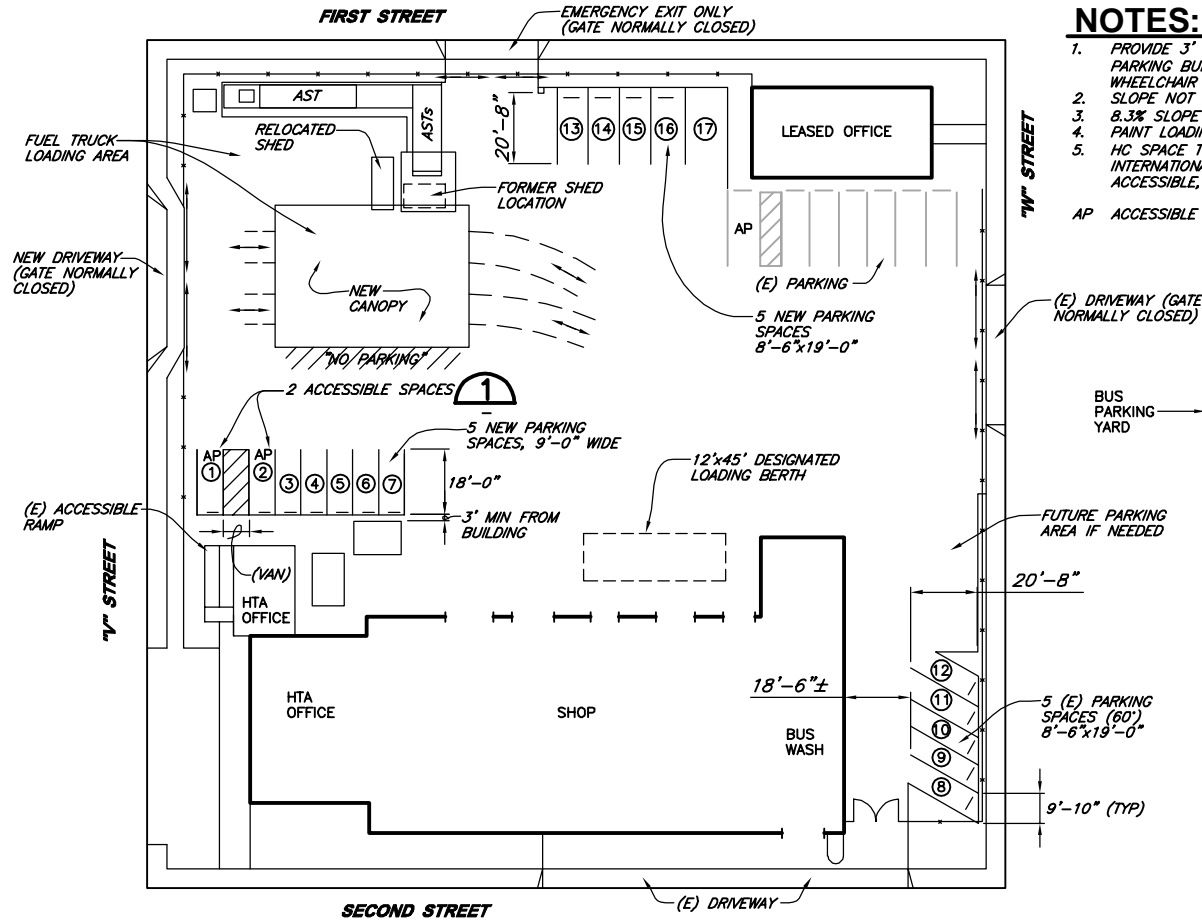


SIGN R7-8b
SEE NOTES 2 AND 6

DETAIL 1
NTS

NOTES:

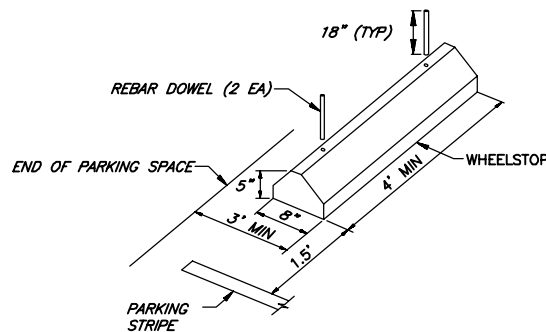
1. ACCESSIBLE PARKING SPACES SERVING A PARTICULAR BUILDING SHALL BE LOCATED ON THE SHORTEST ACCESSIBLE ROUTE OF TRAVEL FROM ADJACENT PARKING TO AN ACCESSIBLE ENTRANCE. IN PARKING FACILITIES THAT DO NOT SERVE A PARTICULAR BUILDING, ACCESSIBLE PARKING SHALL BE LOCATED ON THE SHORTEST ACCESSIBLE ROUTE OF TRAVEL TO AN ACCESSIBLE PEDESTRIAN ENTRANCE OF THE PARKING FACILITY.
2. ONE IN EVERY EIGHT ACCESSIBLE OFF-STREET PARKING STALLS, BUT NOT LESS THAN ONE, SHALL BE SERVED BY AN ACCESSIBLE AISLE OF 8'-0" MINIMUM WIDTH AND SHALL BE SIGNED VAN ACCESSIBLE. THE R7-8B SIGN SHALL BE MOUNTED BELOW THE R99B (CA) PLAQUE OR THE R99C (CA) SIGN.
3. IN EACH PARKING STALL, A CURB OR BUMPER SHALL BE PROVIDED AND LOCATED TO PREVENT ENCROACHMENT OF VEHICLES OVER THE REQUIRED WIDTH OF WALKWAYS. PARKING STALLS SHALL BE SO LOCATED THAT PERSONS WITH DISABILITIES ARE NOT COMPELLED TO WHEEL OR WALK BEHIND PARKED CARS OTHER THAN THEIR OWN.
4. SURFACE SLOPES OF ACCESSIBLE OFF-STREET PARKING STALLS SHALL BE THE MINIMUM POSSIBLE AND SHALL NOT EXCEED 2 PERCENT IN ANY DIRECTION.
5. WHERE PLAQUE R99B (CA), SIGN R99C (CA) OR SIGN R7-8B ARE INSTALLED, THE BOTTOM OF THE SIGN OR PLAQUE PANEL SHALL BE A MINIMUM OF 7'-0" ABOVE THE SURROUNDING SURFACE.
6. CURB RAMP SHALL CONFORM TO THE DETAILS SHOWN ON REVISED STANDARD PLAN RSP A88A.
7. BLUE PAINT, INSTEAD OF WHITE MAY BE USED FOR MARKING ACCESSIBILITY AISLES IN AREAS WHERE SNOW MAY CAUSE WHITE MARKINGS TO NOT BE VISIBLE.
8. THE WORDS "NO PARKING" SHALL BE PAINTED IN WHITE LETTERS NO LESS THAN 1'-0" HIGH AND LOCATED SO THAT IT IS VISIBLE TO TRAFFIC ENFORCEMENT OFFICIALS. SEE REVISED STANDARD PLAN RSP A90B FOR DETAILS OF THE "NO PARKING" PAVEMENT MARKING.
9. A R100B (CA) SIGN SHALL BE POSTED IN A CONSPICUOUS PLACE AT EACH ENTRANCE TO OFF-STREET PARKING FACILITIES OR IMMEDIATELY ADJACENT TO AND VISIBLE FROM EACH STALL. THE SIGN SHALL INCLUDE THE ADDRESS WHERE THE TOWED VEHICLE MAY BE RECLAIMED AND THE TELEPHONE NUMBER OF THE LOCAL TRAFFIC LAW ENFORCEMENT AGENCY.
10. WHERE A SINGLE (NON-VAN) ACCESSIBLE PARKING SPACE IS PROVIDED, THE LOADING AND UNLOADING ACCESS AISLE SHALL BE ON THE PASSENGER SIDE OF THE VEHICLE AS THE VEHICLE IS GOING FORWARD INTO THE PARKING SPACE.
11. WHERE A VAN ACCESSIBLE PARKING SPACE IS PROVIDED, THE LOADING AND UNLOADING ACCESS AISLE SHALL BE 8'-0" WIDE MINIMUM, AND SHALL BE ON THE PASSENGER SIDE OF THE VEHICLE AS THE VEHICLE IS GOING FORWARD INTO THE PARKING SPACE.
12. ACCESSIBLE PARKING ONLY SIGN SHALL BE SIGN R99C (CA) OR SIGN R99 (CA) WITH PLAQUE R99B (CA).



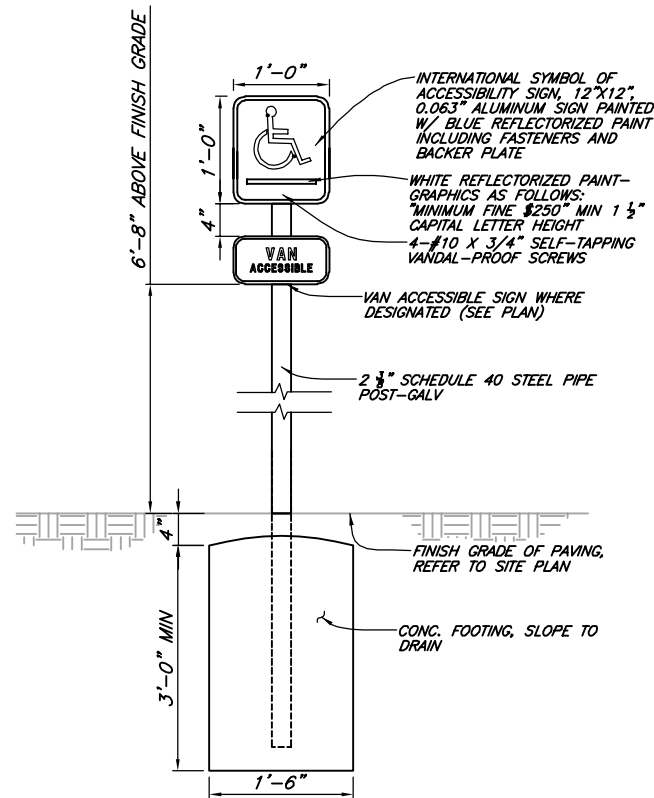
PARKING PLAN
NTS

NOTES:

1. PROVIDE 3" VERTICAL OVERHANG FROM PARKING BUMPER AND 4' FOR WHEELCHAIR ACCESS.
 2. SLOPE NOT TO EXCEED 2%.
 3. 8.3% SLOPE (MAX) UP TO SIDEWALK.
 4. PAINT LOADING ZONE STRIPE BLUE.
 5. HC SPACE TO HAVE A 3'X3' INTERNATIONAL SYMBOL FOR HANDICAP ACCESSIBLE, PAINTED BLUE.
- AP ACCESSIBLE PARKING



DETAIL 2
NTS



DETAIL 3
NTS

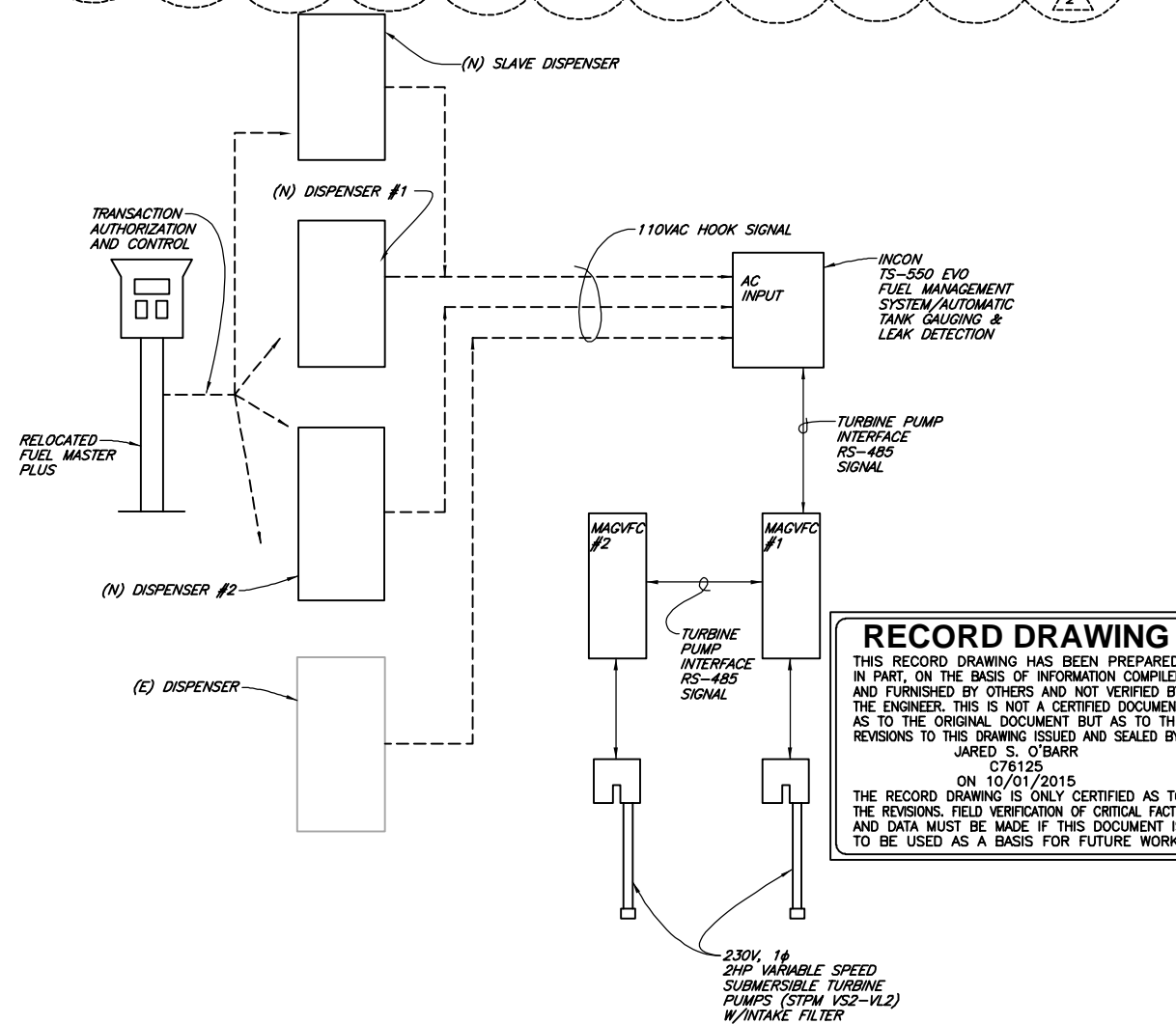
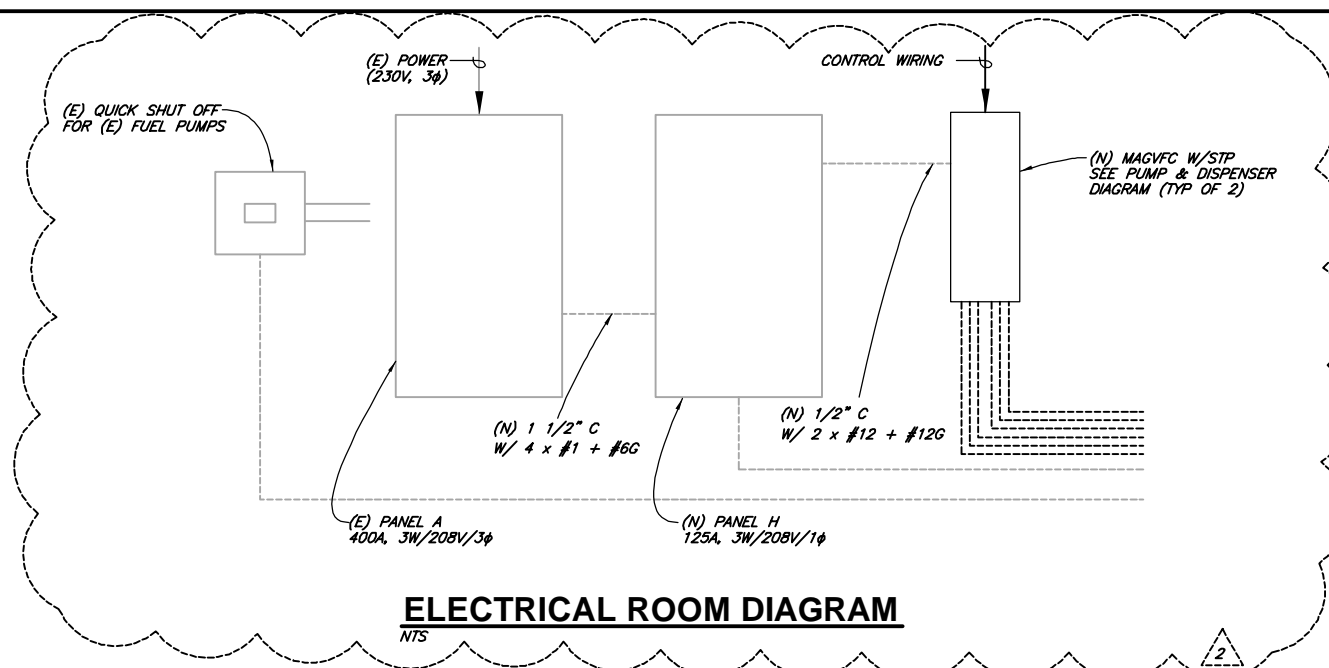
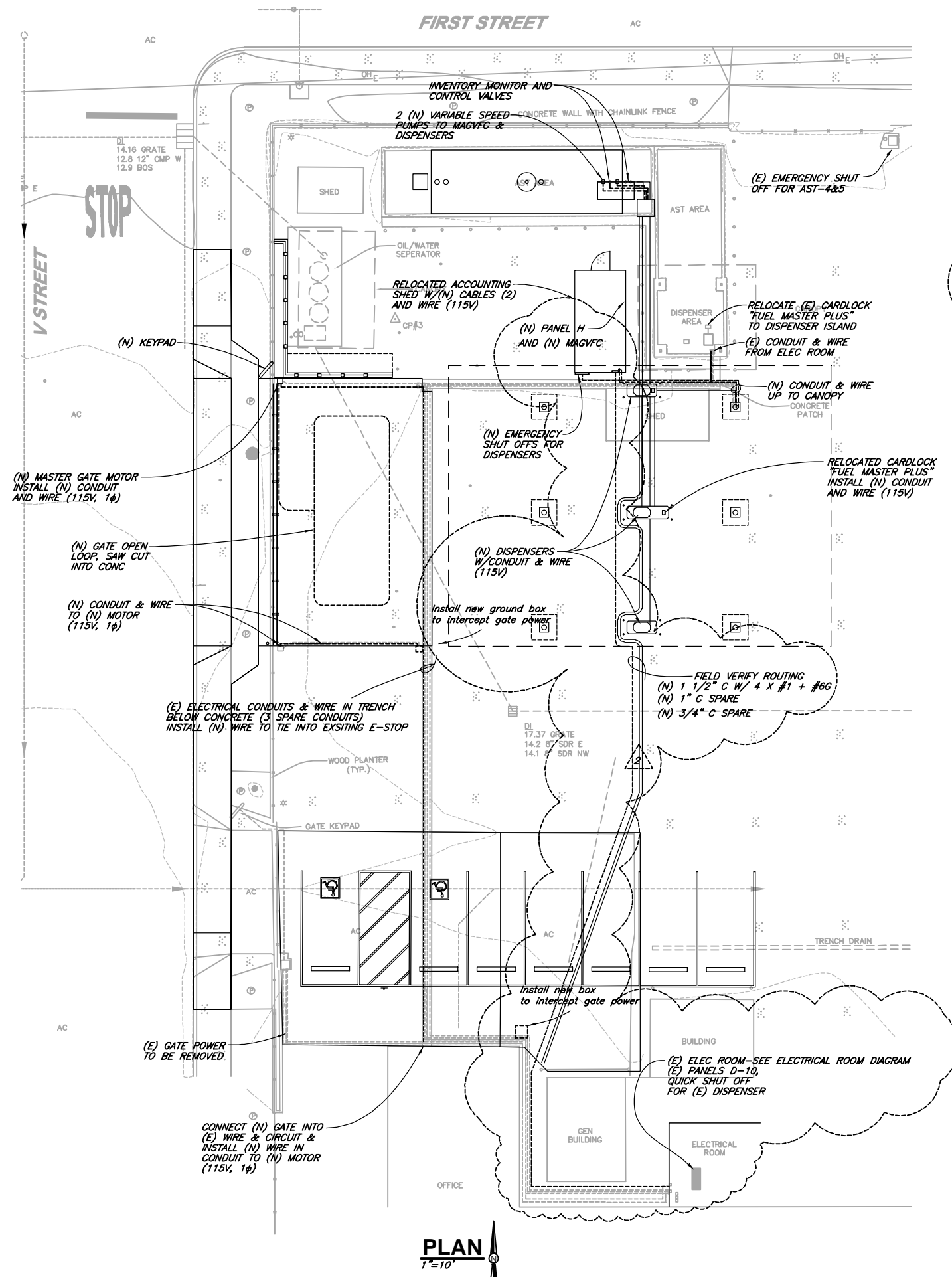
RECORD DRAWING

THIS RECORD DRAWING HAS BEEN PREPARED, IN PART, ON THE BASIS OF INFORMATION COMPILED AND FURNISHED BY OTHERS AND NOT VERIFIED BY THE ENGINEER. THIS IS NOT A CERTIFIED DOCUMENT AS TO THE ORIGINAL DOCUMENT BUT AS TO THE REVISIONS TO THIS DRAWING ISSUED AND SEALED BY: JARED S. O'BARR

C76125
ON 10/01/2015
THE RECORD DRAWING IS ONLY CERTIFIED AS TO THE REVISIONS. FIELD VERIFICATION OF CRITICAL FACTS AND DATA MUST BE MADE IF THIS DOCUMENT IS TO BE USED AS A BASIS FOR FUTURE WORK.



VERIFY SCALES		B&S IS ONE INCH ON ORIGINAL DRAWING		IF NOT ONE INCH ON THIS SHEET, ADJUST SCALES ACCORDINGLY	
CONSULTING ENGINEERS & GEOLOGISTS, INC.		WWW.SHN-ENGR.COM		812 W. WABASH AVE. EUREKA, CA. 95501	
PB		BY		DATE	
REVISION		NO.		DATE	
DSGN		ISO/PB		DR	
CHK		NMD		MEL	
APVD		APVD		APVD	
HUMBOLDT TRANSIT AUTHORITY FUELING FACILITY PROJECT 133 V ST (APN 002-091-008) EUREKA, CALIFORNIA					
PARKING-PLAN					
SHEET C-7					
SEQ 9					
DATE 10/2015					
PROJ. NO. 014004.100					

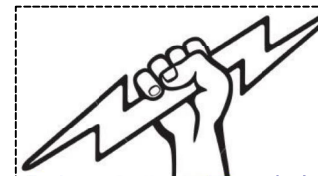


PUMP & DISPENSER DIAGRAM

NTS

NOTES:

- NOTES:**
1. SEE PRODUCT INSTALLATION INSTRUCTIONS FOR FURTHER DETAILS.
 2. WIRING MUST CONFORM TO ALL FEDERAL, STATE, AND LOCAL CODES.
 3. CONTROL PANELS ARE FOR NON-HAZARDOUS, INDOOR USE ONLY.
 4. ELECTRICAL CONTRACTOR TO DESIGN/BUILD SYSTEM. SUBMIT ONE-LINE DIAGRAM FOR APPROVAL PRIOR TO CONSTRUCTION.



Robert Colburn Electric Inc.
PO Box 3667 Eureka, CA 95502
707-445-8474 office@colburn-electric.com
CA Lic# 750471

HUMBOLDT TRANSIT AUTHORITY FUELING FACILITY PROJECT 133 V ST (APN 002-091-008) EUREKA, CALIFORNIA				DSCN		JSD/PB																																																																																																																																																																																																																																																																																																																																																																																																																																																																																																																																																																																																																																																																																																																																																																																																																																																																																																																																																																																																																																																																																																																																																																																																																																																																																																																																																																																																																																									
---	--	--	--	------	--	--------	--	--	--	--	--	--	--	--	--	--	--	--	--	--	--	--	--	--	--	--	--	--	--	--	--	--	--	--	--	--	--	--	--	--	--	--	--	--	--	--	--	--	--	--	--	--	--	--	--	--	--	--	--	--	--	--	--	--	--	--	--	--	--	--	--	--	--	--	--	--	--	--	--	--	--	--	--	--	--	--	--	--	--	--	--	--	--	--	--	--	--	--	--	--	--	--	--	--	--	--	--	--	--	--	--	--	--	--	--	--	--	--	--	--	--	--	--	--	--	--	--	--	--	--	--	--	--	--	--	--	--	--	--	--	--	--	--	--	--	--	--	--	--	--	--	--	--	--	--	--	--	--	--	--	--	--	--	--	--	--	--	--	--	--	--	--	--	--	--	--	--	--	--	--	--	--	--	--	--	--	--	--	--	--	--	--	--	--	--	--	--	--	--	--	--	--	--	--	--	--	--	--	--	--	--	--	--	--	--	--	--	--	--	--	--	--	--	--	--	--	--	--	--	--	--	--	--	--	--	--	--	--	--	--	--	--	--	--	--	--	--	--	--	--	--	--	--	--	--	--	--	--	--	--	--	--	--	--	--	--	--	--	--	--	--	--	--	--	--	--	--	--	--	--	--	--	--	--	--	--	--	--	--	--	--	--	--	--	--	--	--	--	--	--	--	--	--	--	--	--	--	--	--	--	--	--	--	--	--	--	--	--	--	--	--	--	--	--	--	--	--	--	--	--	--	--	--	--	--	--	--	--	--	--	--	--	--	--	--	--	--	--	--	--	--	--	--	--	--	--	--	--	--	--	--	--	--	--	--	--	--	--	--	--	--	--	--	--	--	--	--	--	--	--	--	--	--	--	--	--	--	--	--	--	--	--	--	--	--	--	--	--	--	--	--	--	--	--	--	--	--	--	--	--	--	--	--	--	--	--	--	--	--	--	--	--	--	--	--	--	--	--	--	--	--	--	--	--	--	--	--	--	--	--	--	--	--	--	--	--	--	--	--	--	--	--	--	--	--	--	--	--	--	--	--	--	--	--	--	--	--	--	--	--	--	--	--	--	--	--	--	--	--	--	--	--	--	--	--	--	--	--	--	--	--	--	--	--	--	--	--	--	--	--	--	--	--	--	--	--	--	--	--	--	--	--	--	--	--	--	--	--	--	--	--	--	--	--	--	--	--	--	--	--	--	--	--	--	--	--	--	--	--	--	--	--	--	--	--	--	--	--	--	--	--	--	--	--	--	--	--	--	--	--	--	--	--	--	--	--	--	--	--	--	--	--	--	--	--	--	--	--	--	--	--	--	--	--	--	--	--	--	--	--	--	--	--	--	--	--	--	--	--	--	--	--	--	--	--	--	--	--	--	--	--	--	--	--	--	--	--	--	--	--	--	--	--	--	--	--	--	--	--	--	--	--	--	--	--	--	--	--	--	--	--	--	--	--	--	--	--	--	--	--	--	--	--	--	--	--	--	--	--	--	--	--	--	--	--	--	--	--	--	--	--	--	--	--	--	--	--	--	--	--	--	--	--	--	--	--	--	--	--	--	--	--	--	--	--	--	--	--	--	--	--	--	--	--	--	--	--	--	--	--	--	--	--	--	--	--	--	--	--	--	--	--	--	--	--	--	--	--	--	--	--	--	--	--	--	--	--	--	--	--	--	--	--	--	--	--	--	--	--	--	--	--	--	--	--	--	--	--	--	--	--	--	--	--	--	--	--	--	--	--	--	--	--	--	--	--	--	--	--	--	--	--	--	--	--	--	--	--	--	--	--	--	--	--	--	--	--	--	--	--	--	--	--	--	--	--	--	--	--	--	--	--	--	--	--	--	--	--	--	--	--	--	--	--	--	--	--	--	--	--	--	--	--	--	--	--	--	--	--	--	--	--	--	--	--	--	--	--	--	--	--	--	--	--	--	--	--	--	--	--	--	--	--	--	--	--	--	--	--	--	--	--	--	--	--	--	--	--	--	--	--	--	--	--	--	--	--	--	--	--	--	--	--	--	--	--	--	--	--	--	--	--	--	--	--	--	--	--	--	--	--	--	--	--	--	--	--	--	--	--	--	--	--	--	--	--	--	--	--	--	--	--	--	--	--	--	--	--	--	--	--	--	--	--	--	--	--	--	--	--	--	--	--	--	--	--	--	--	--	--	--	--	--	--	--	--	--	--	--	--	--	--	--	--	--	--	--	--	--	--	--	--	--	--	--	--	--	--	--	--	--	--	--	--	--	--	--	--	--	--	--	--	--	--	--	--	--	--	--	--	--	--	--	--	--	--	--	--	--	--	--	--	--	--	--	--	--	--	--	--	--	--	--	--	--	--	--	--	--	--	--	--	--	--	--	--	--	--	--	--	--	--	--	--	--	--	--	--	--	--	--	--	--	--	--	--	--	--	--	--	--	--	--	--	--	--	--	--	--	--	--	--	--	--	--	--	--	--	--	--	--	--	--	--	--	--	--	--	--	--	--	--	--	--	--	--	--	--	--	--	--	--	--	--	--	--	--	--	--	--	--	--	--	--	--	--	--	--	--	--	--	--	--	--	--	--	--	--	--	--	--	--	--	--	--	--	--	--	--	--	--	--	--	--	--	--	--	--	--	--	--	--	--	--	--	--	--	--	--	--	--	--	--	--	--	--	--	--	--	--	--	--	--	--	--	--	--	--	--	--	--	--	--	--	--	--	--	--	--	--	--	--	--	--	--	--	--	--	--	--	--	--	--	--	--	--	--	--	--	--	--	--	--	--	--	--	--	--	--	--	--	--	--	--	--	--	--	--	--	--	--	--	--	--	--	--	--	--	--	--	--	--	--	--	--	--	--	--	--	--	--	--	--	--	--	--	--	--	--	--	--	--	--	--	--	--	--	--	--	--	--	--	--	--	--	--	--	--	--	--	--	--	--	--	--	--	--	--	--	--	--	--	--	--	--	--	--	--	--	--	--	--	--	--	--	--	--	--	--	--	--	--	--	--	--	--	--	--	--	--	--	--	--	--	--	--	--	--	--	--	--	--	--	--	--	--	--	--	--	--	--	--	--	--	--	--	--	--	--	--	--	--	--	--	--	--	--	--	--	--	--	--	--	--	--	--	--	--	--	--	--	--	--	--	--	--	--	--	--	--	--